

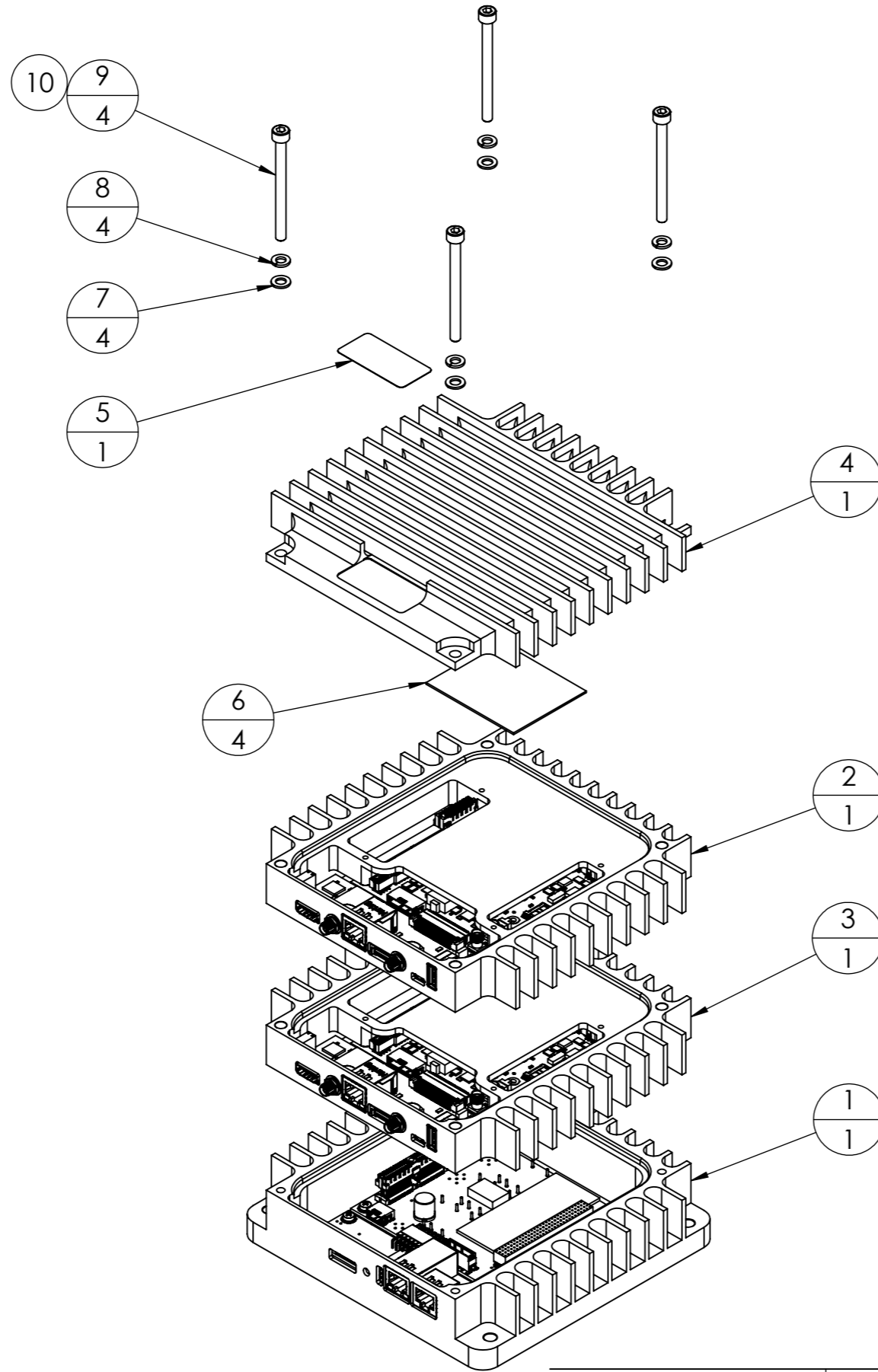


SUNDANCE

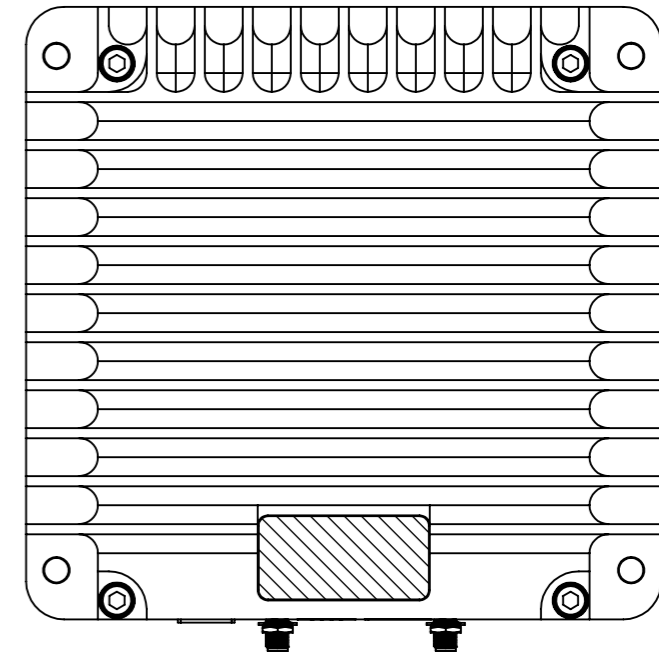
# Stackable Blade for PC/104 Modules



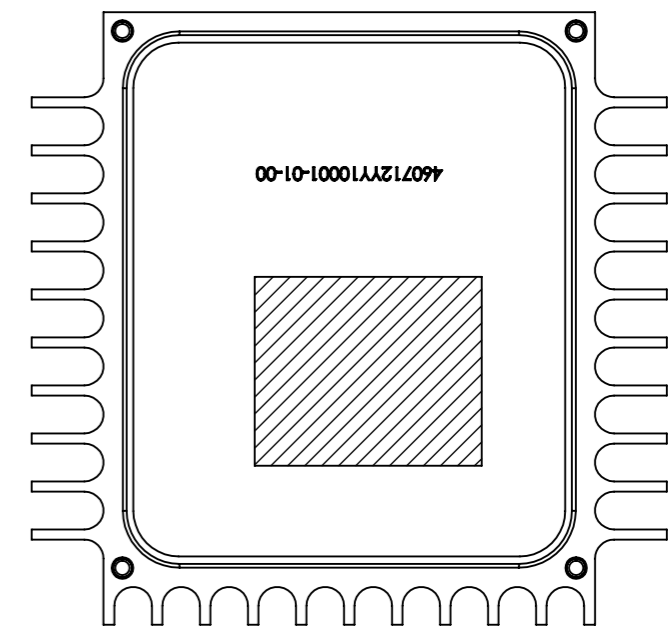
? TOP ITEM NUMBER.  
? BOTTOM QTY OF ITEM.



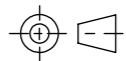
LABEL PLACEMENT



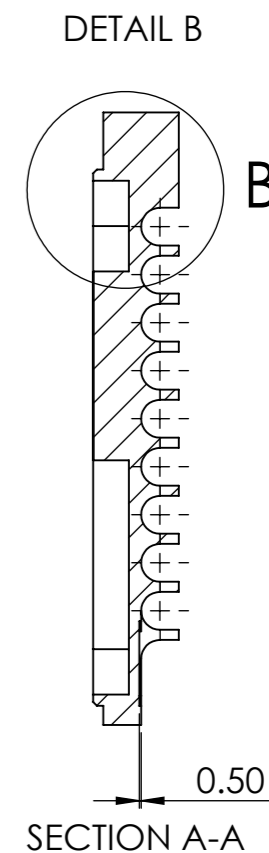
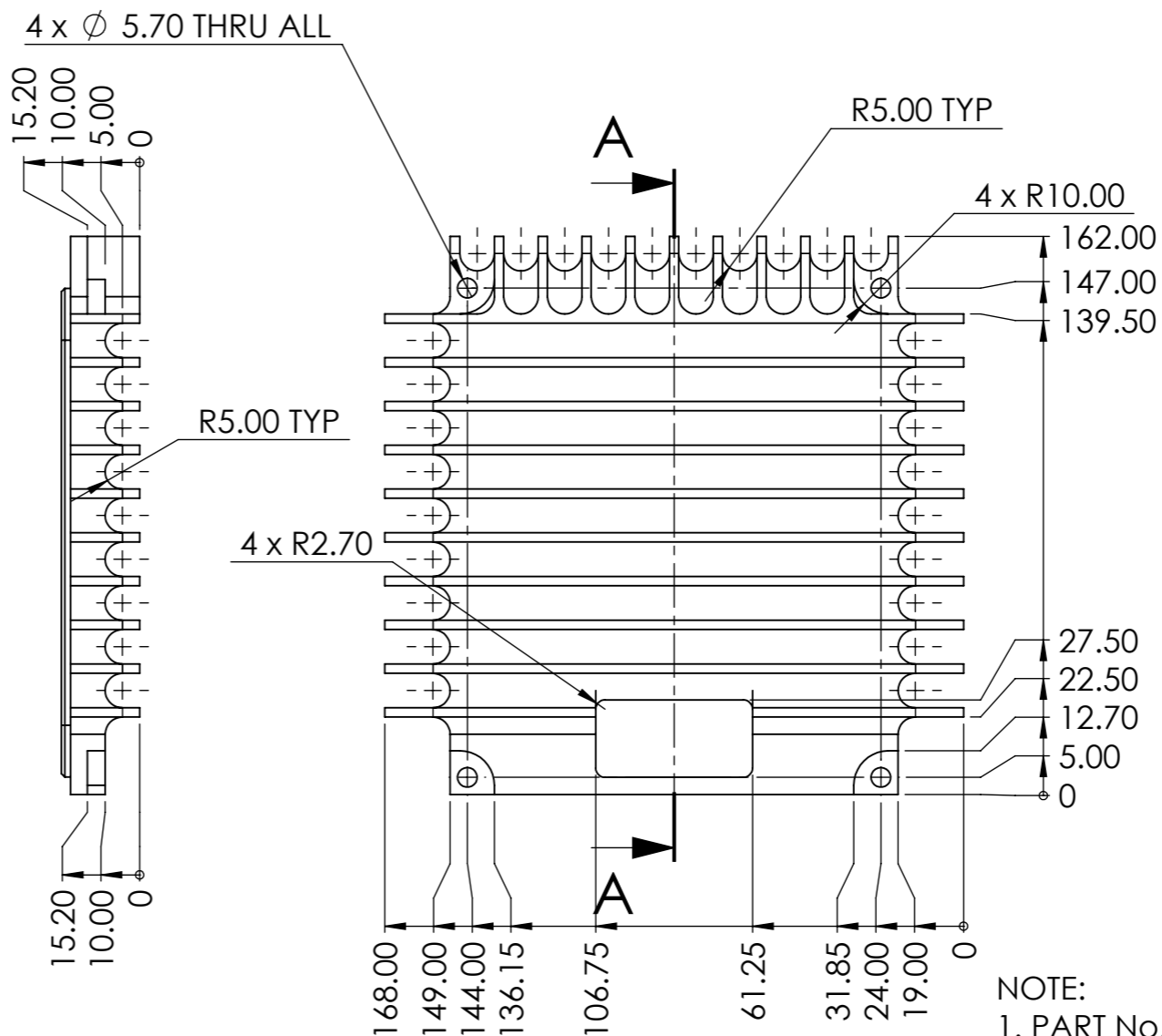
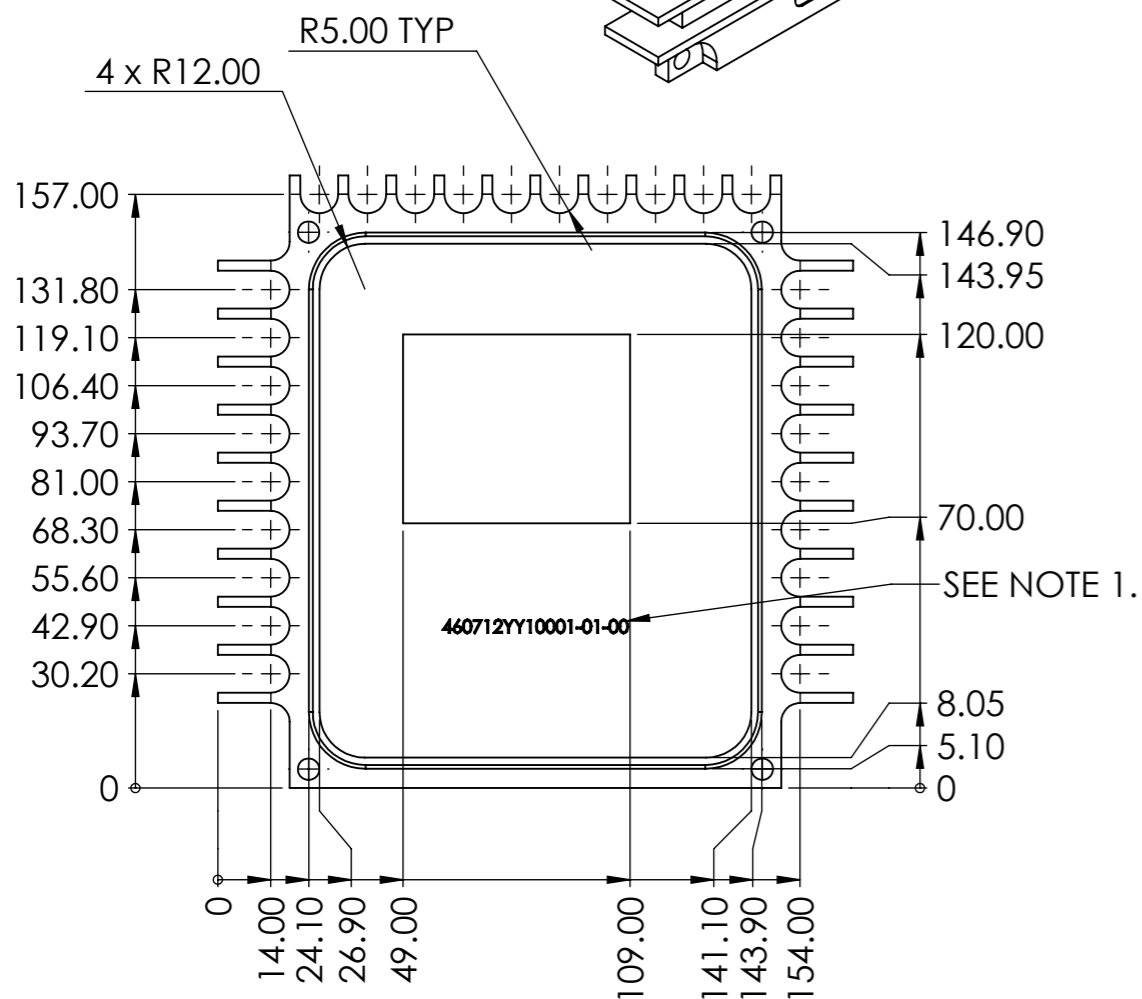
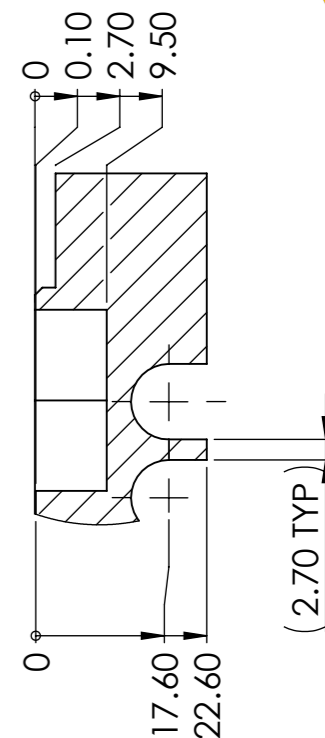
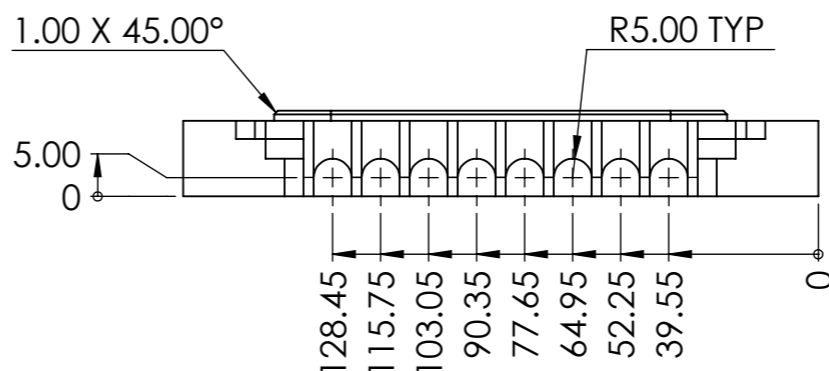
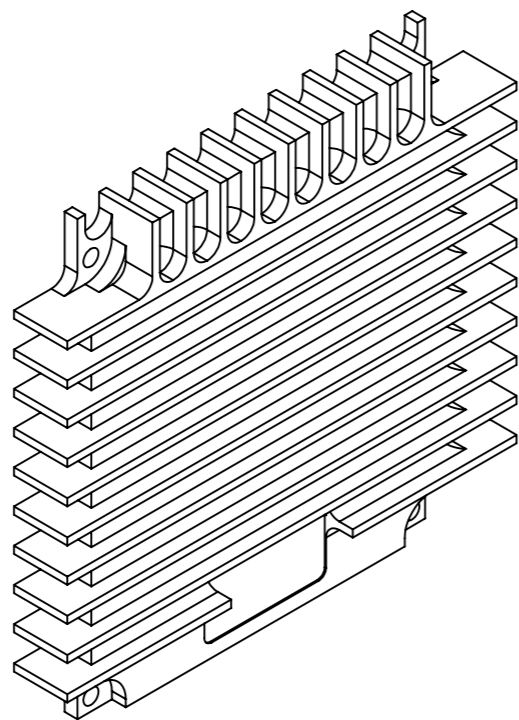
THERMAL PAD PLACEMENT



COMPANY RESTRICTED	SIZE: A3	SCALE: N.T.S.	COMPUTER FILE NAME: 460712YY00000D05.sldrw	SEE RELEASE NOTE FOR APPROVAL SIGNATORIES	RN-2018-541	MATERIAL: See Parts List.	TITLE: TULIPP BLADE
	SHEET: 1 of 1	DRAWN TO ISO 128	UNSPECIFIED ±2.0 LIMITS UNLESS STATED: 2 DECIMALS ±1.0	01	H.E/899	2018/05/04	1st. RELEASE
		DO NOT SCALE	DIMENSIONS ARE IN mm	REV	DRAWN	DATE	PARTICULARS
							460712YY00000D05 01



MASS (g) ± 5%	547.06
VOLUME (mm³) ± 5%	201866.25
SURFACE AREA (mm²) ± 5%	95817.48



NOTE:  
 1. PART No. ENGRAVE TO ST-768-364-01 C06.  
 2. FOR PAINTING SEE D10 DRAWING.

COMPUTER FILE NAME  
460712YY10001D06.slddrw

LIMITS APPLY  
AFTER PLATING

COMPANY  
RESTRICTED

DRAWN TO ISO 128  
LIMITS UNLESS STATED:  
UNSPECIFIED ±0.4  
2 DECIMALS ±0.1

SEE RELEASE NOTE  
FOR APPROVAL SIGNATORIES

RN-2018-541

MATERIAL:  
Al 6082 T6

TITLE:

TULIPP BLADE LID

ANGLES  
±0° 30'

SIZE:  
A3

SCALE:  
N.T.S.

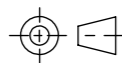
ISO 1302  
ISO 13715  
R<sub>a</sub> 1.6  
±0.1  
±0.1

UNLESS OTHERWISE STATED  
DO NOT SCALE  
DIMENSIONS ARE IN mm

FINISH:  
Chromate conversion coat to  
ST-256-436-01 C06 TYPE II CLASS IA.

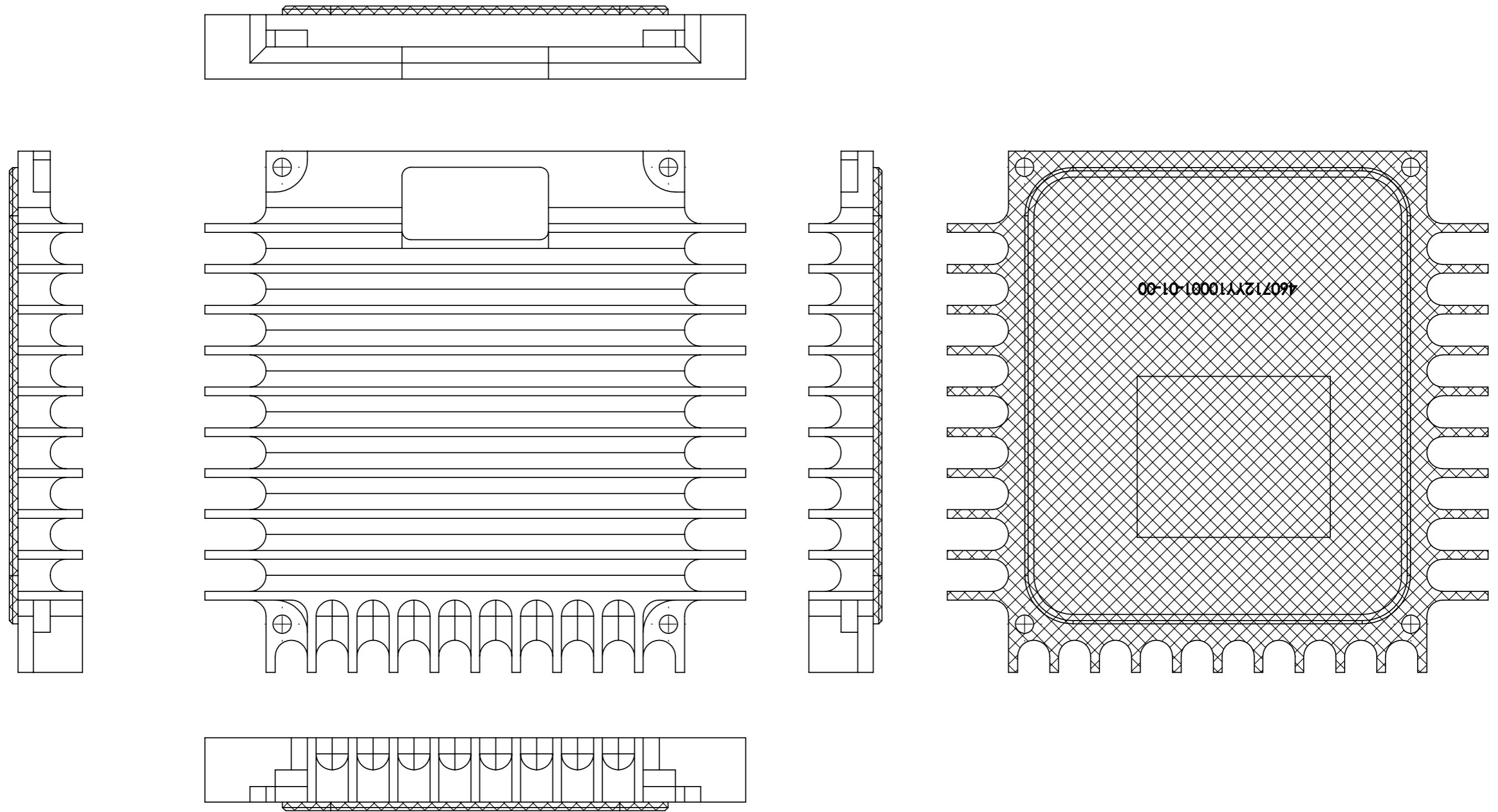
DRAWING NO.:  
460712YY10001D06

REV:  
01



SHEET:  
1 of 1

01	H.E/899	2018/05/04	1st. RELEASE
REV	DRAWN	DATE	PARTICULARS



NOTE:

1. MASK HATCHED AREAS AND HOLES PRIOR TO PAINTING.
2. PAINT TO BE PROGRAM SPECIFIC IN ACCORDANCE WITH THE SUPPLIED C06 DOCUMENT.
3. ADD PREFIX FOR COLOUR VARIATION AS PER PURCHASE ORDER.

SEE RELEASE NOTE FOR APPROVAL SIGNATORIES		RN-2018-541	
01	H.E/899	2018/05/04	1st. RELEASE
REV	DRAWN	DATE	PARTICULARS

MATERIAL:  
Al 6082 T6

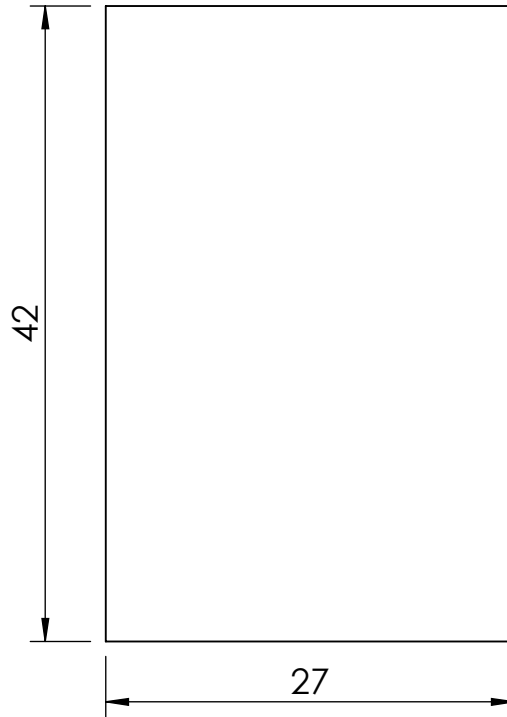
TITLE:

TULIPP BLADE LID

COMPANY RESTRICTED	SIZE: <b>A3</b>	SCALE: N.T.S.	COMPUTER FILE NAME 460712YY10001D10.sldrw
	DRAWN TO ISO 128		
	SHEET: 1 of 1	DO NOT SCALE   DIMENSIONS ARE IN mm	

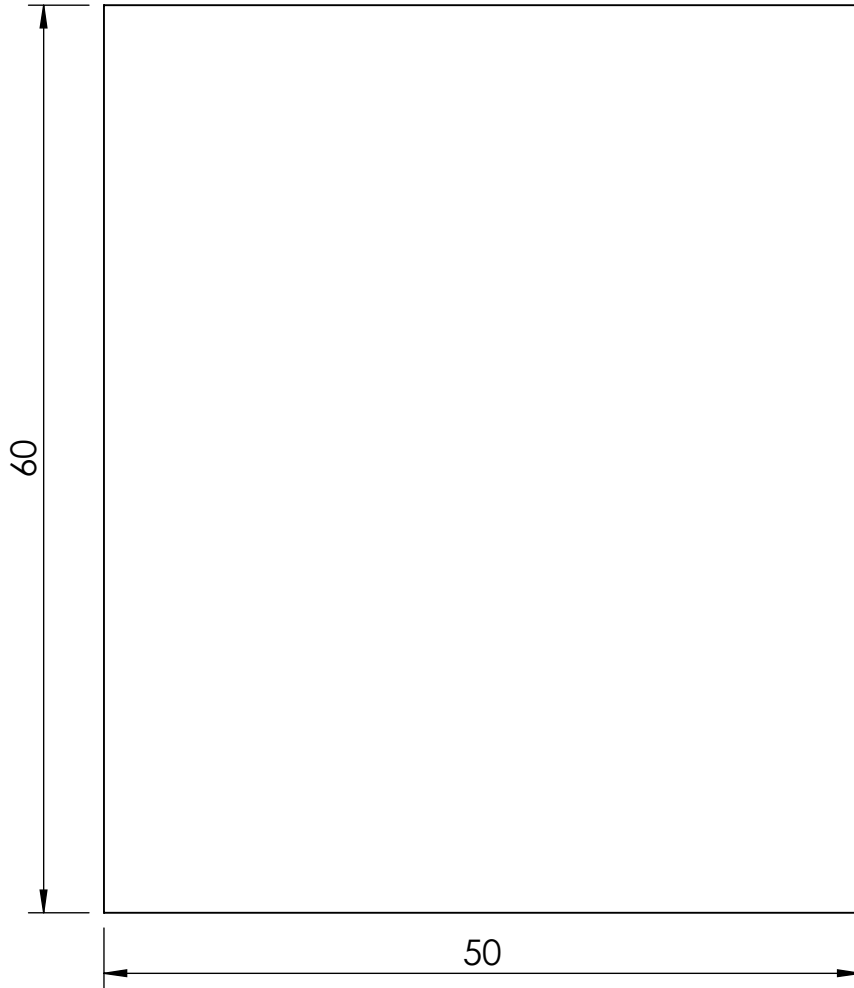
FINISH:  
See Notes.

DRAWING NO.: **460712YY10001D10**      REV: **01**



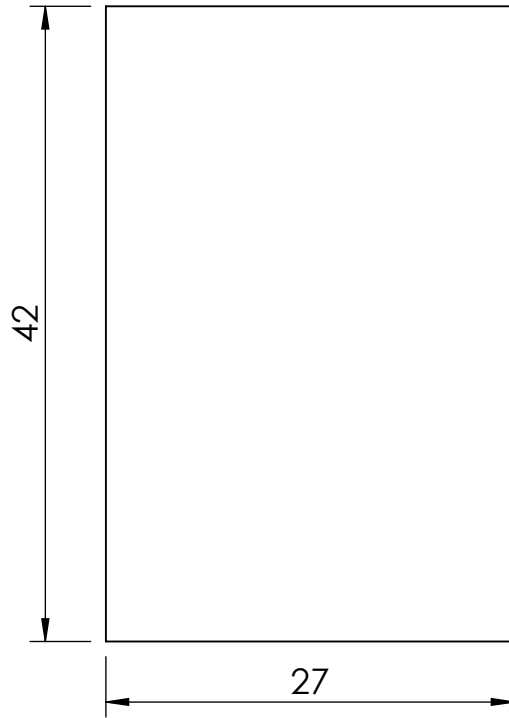
**NOTE:**  
 TOLERANCES ON ALL DIMENSIONS IS +1.0mm AND -0.0mm.  
 MATERIAL THICKNESS 1mm.

DRAWN TO ISO 128		UNSPECIFIED ±0.4	SEE RELEASE NOTE			RN-2018-541	MATERIAL: See Parts List.
LIMITS UNLESS STATED:		2 DECIMALS ±0.1	FOR APPROVAL SIGNATORIES				
ISO 1302	ISO 13715	-0.1	+0.1				
UNLESS OTHERWISE STATED			01	H.E/899	2018/05/04	1st RELEASE	FINISH: N/A
DO NOT SCALE	DIMENSIONS ARE IN mm		REV	DRAWN	DATE	PARTICULARS	
COMPUTER FILE NAME			LIMITS APPLY AFTER PLATING		COMPANY RESTRICTED		TITLE:
460712YY10011D06.slddrw			ANGLES ±0° 30'		SIZE: A4	SCALE: N.T.S.	THERMAL PAD 1
					SHEET: 1 OF 1	DRAWING NO.:	REV:
					460712YY10011D06		01



**NOTE:**  
 TOLERANCES ON ALL DIMENSIONS IS +1.0mm AND -0.0mm.  
 MATERIAL THICKNESS 1mm.

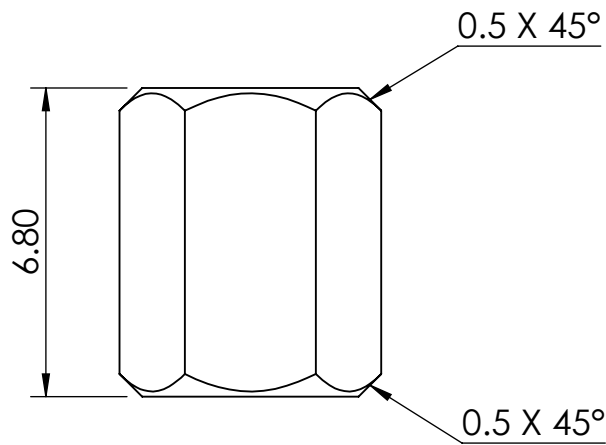
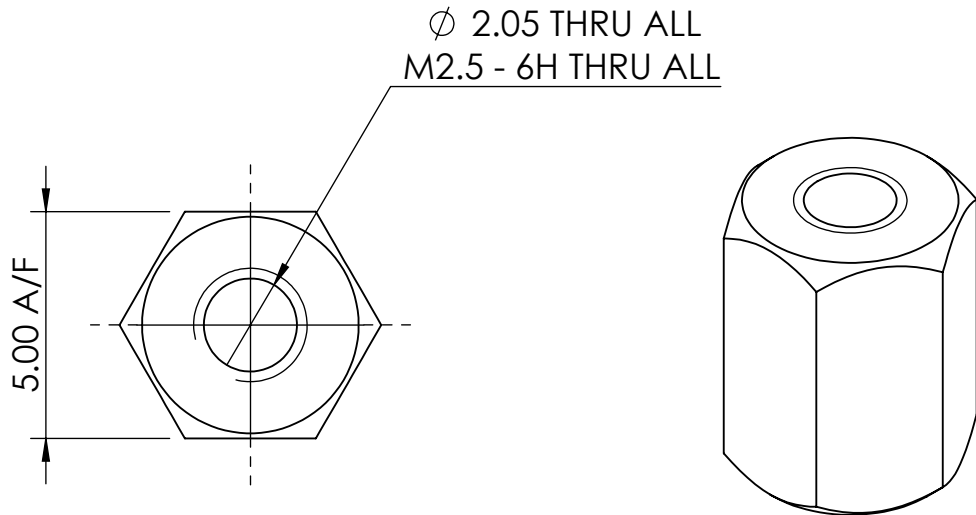
DRAWN TO ISO 128		UNSPECIFIED ±0.4		SEE RELEASE NOTE		RN-2018-541		MATERIAL:	
LIMITS UNLESS STATED:		2 DECIMALS ±0.1		FOR APPROVAL SIGNATORIES				See Parts List.	
ISO 1302	ISO 13715	-0.1	+0.1						
UNLESS OTHERWISE STATED			01	H.E/899	2018/05/04	1st RELEASE		FINISH: N/A	
DO NOT SCALE	DIMENSIONS ARE IN mm		REV	DRAWN	DATE	PARTICULARS			
COMPUTER FILE NAME				LIMITS APPLY AFTER PLATING		COMPANY RESTRICTED		TITLE:	
460712YY10021D06.slddrw								THERMAL PAD 2	
ANGLES ±0° 30'		SIZE:	SCALE:						
		A4	N.T.S.						
		SHEET:		DRAWING NO.:		REV:			
		1 OF 1		460712YY10021D06		01			



NOTE:  
TOLERANCES ON ALL DIMENSIONS IS +1.0mm AND -0.0mm.  
MATERIAL THICKNESS 1.52mm.

DRAWN TO ISO 128		UNSPECIFIED ±0.4		SEE RELEASE NOTE		RN-2018-541		MATERIAL:	
LIMITS UNLESS STATED:		2 DECIMALS ±0.1		FOR APPROVAL SIGNATORIES				See Parts List.	
ISO 1302	ISO 13715	-0.1	+0.1						
UNLESS OTHERWISE STATED			01	H.E/899	2018/05/04	1st RELEASE		FINISH: N/A	
DO NOT SCALE	DIMENSIONS ARE IN mm		REV	DRAWN	DATE	PARTICULARS			
COMPUTER FILE NAME				LIMITS APPLY AFTER PLATING		COMPANY RESTRICTED		TITLE:	
460712YY10031D06.slddrw								THERMAL PAD 3	
		ANGLES ±0° 30'		SIZE: A4		SCALE: N.T.S.			
				SHEET: 1 OF 1		DRAWING NO.:		REV:	
						460712YY10031D06		01	

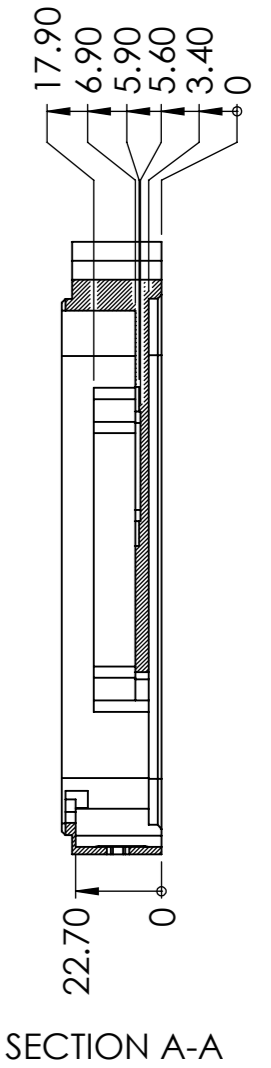
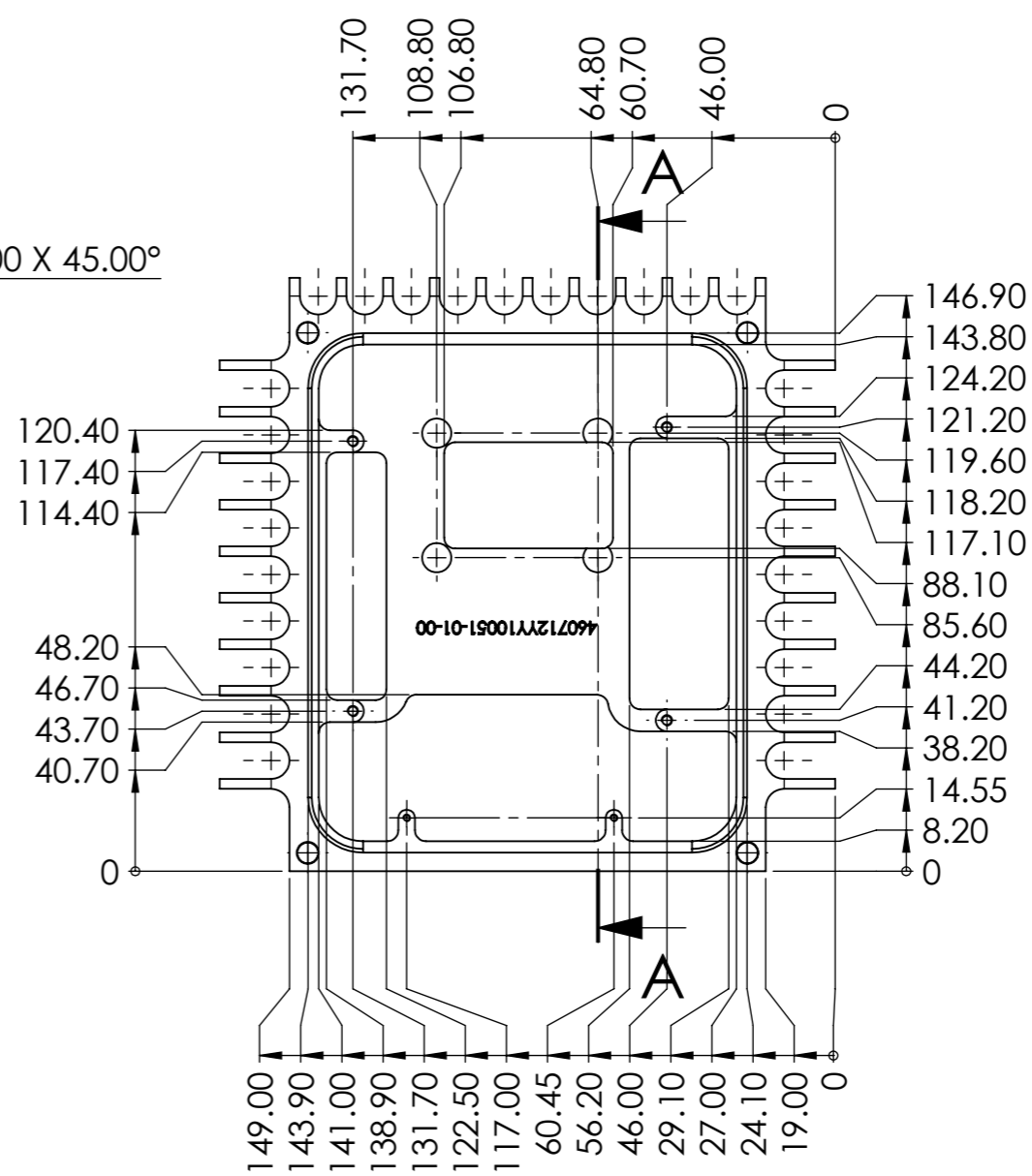
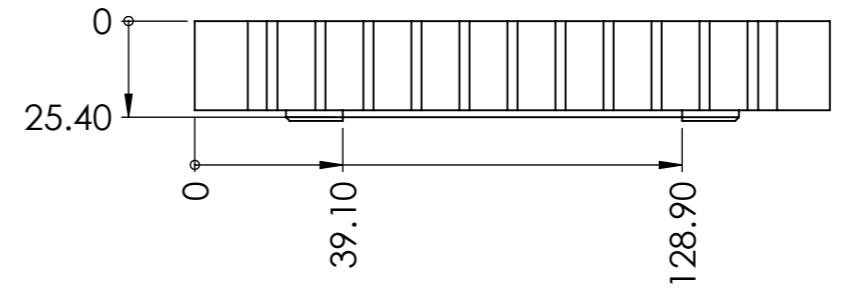
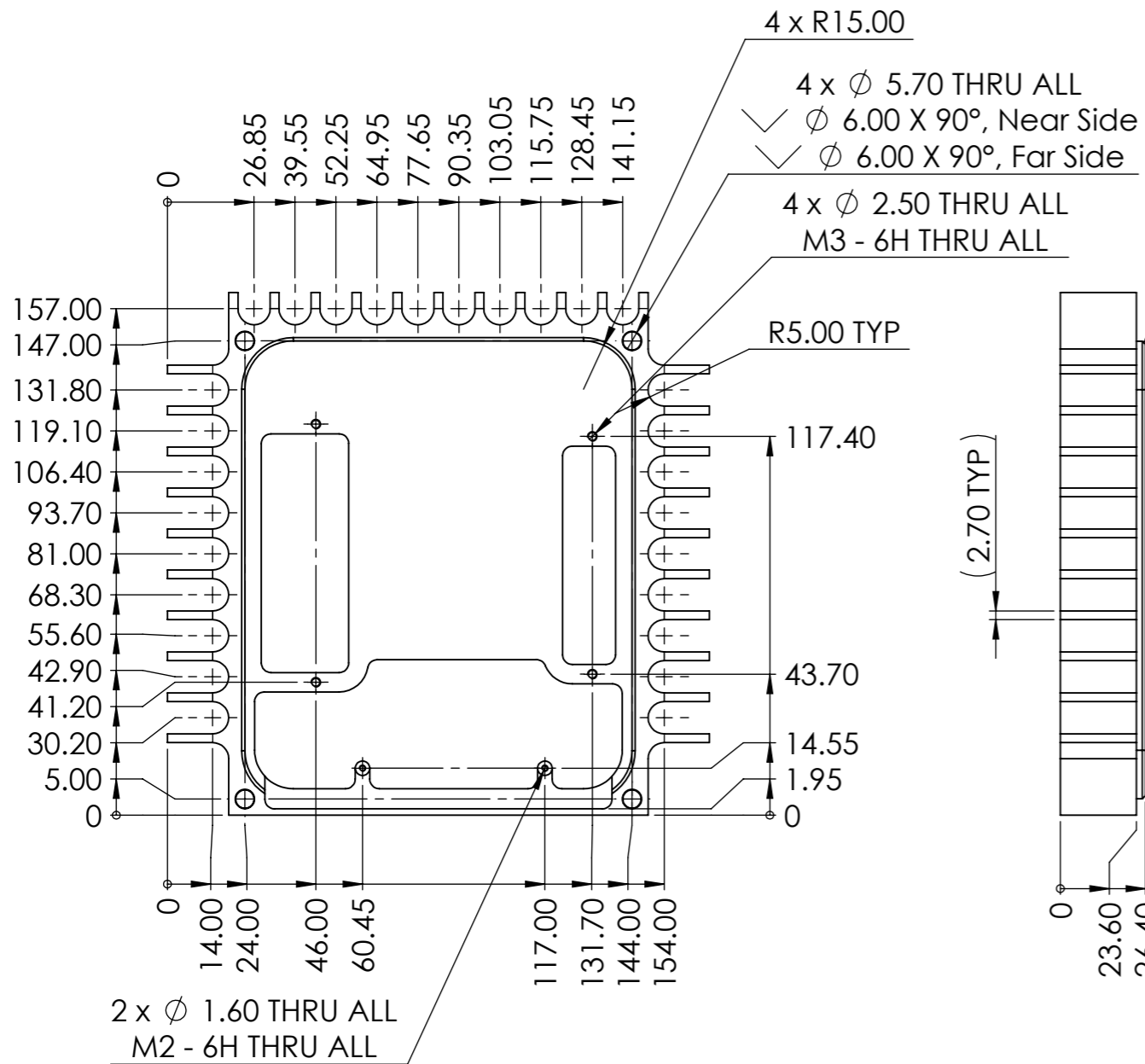




DRAWN TO ISO 128		UNSPECIFIED ±0.4		SEE RELEASE NOTE		RN-2018-541		MATERIAL:	
LIMITS UNLESS STATED:		2 DECIMALS ±0.1		FOR APPROVAL SIGNATORIES				SS AISI 304	
ISO 1302	ISO 13715	-0.1	+0.1						
									FINISH:
UNLESS OTHERWISE STATED			01	H.E/899	2018/05/04	1st RELEASE		Passivate	
DO NOT SCALE	DIMENSIONS ARE IN mm		REV	DRAWN	DATE	PARTICULARS			
COMPUTER FILE NAME				LIMITS APPLY AFTER PLATING		COMPANY RESTRICTED		TITLE:	
460712YY10041D06.slddrw								SPACER	
		ANGLES ±0° 30'		SIZE: A4		SCALE: N.T.S.			
				SHEET: 1 OF 1		DRAWING NO.: 460712YY10041D06		REV: 01	

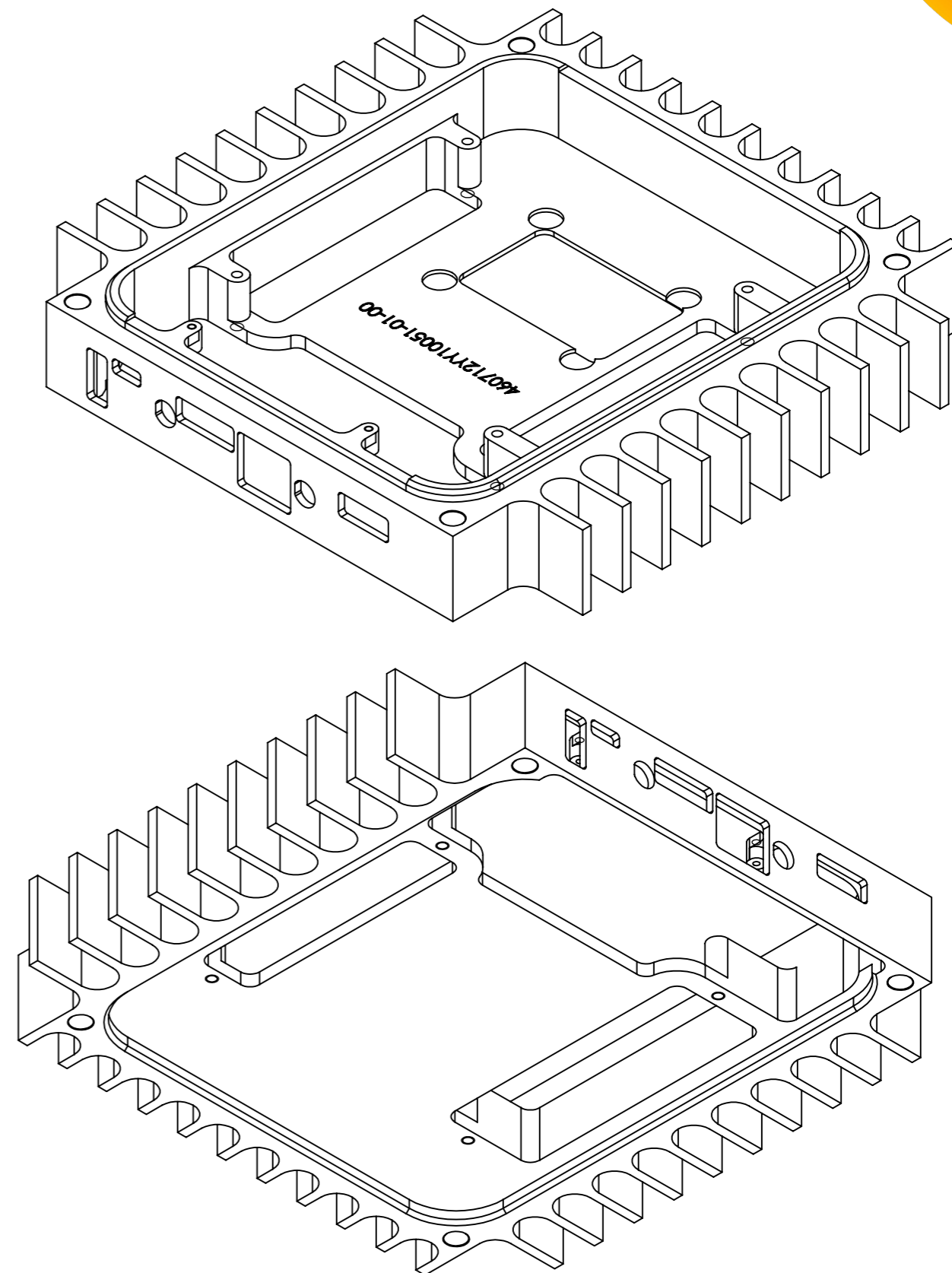
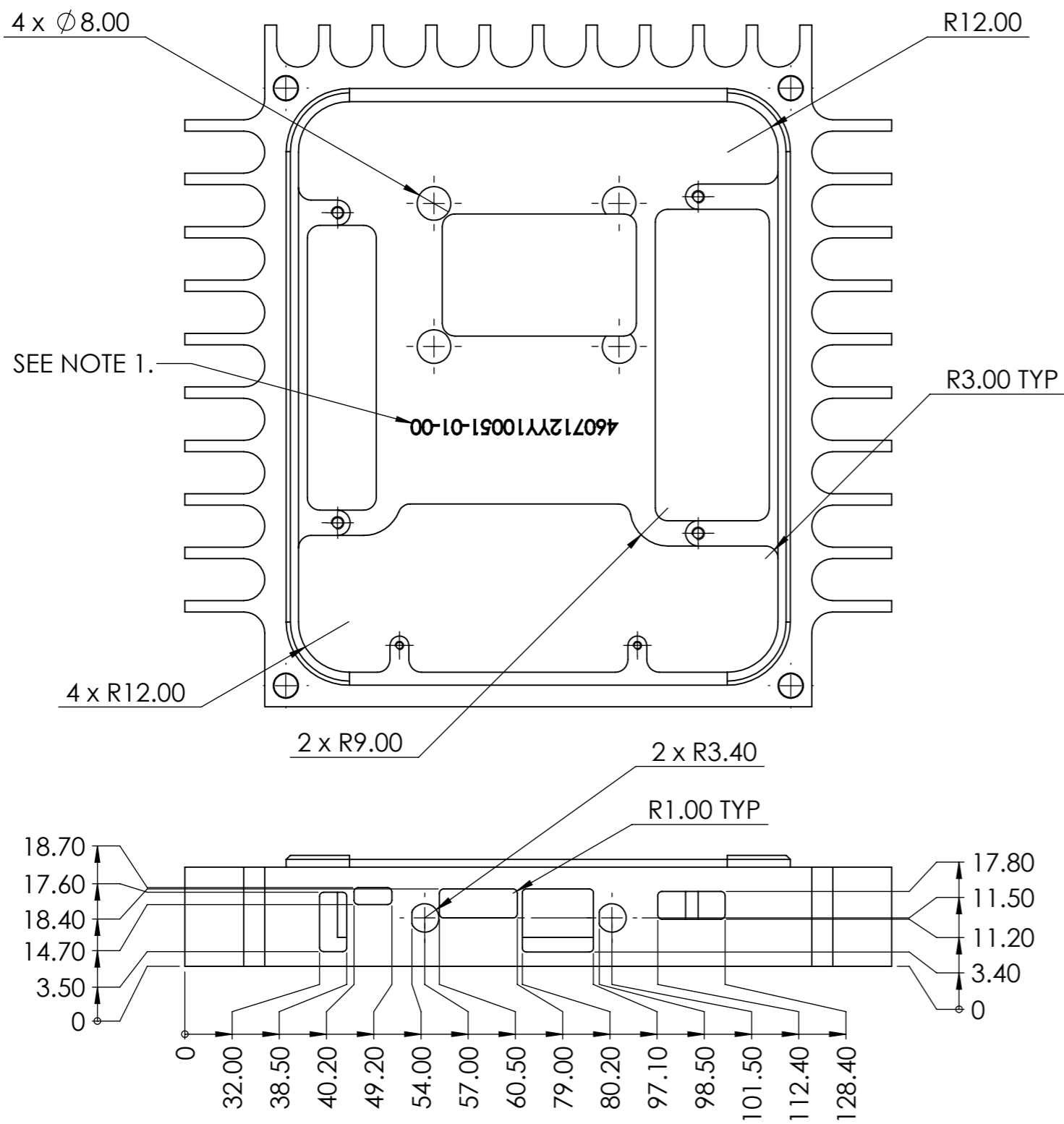


MASS (g) ± 5%	427.92
VOLUME (mm³) ± 5%	157903.71
SURFACE AREA (mm²) ± 5%	79146.64



NOTE:  
 1. PART No. ENGRAVE TO ST-768-364-01 C06.  
 2. FOR PAINTING SEE D10 DRAWING.

COMPUTER FILE NAME 460712YY10051D06.slddrw	LIMITS APPLY AFTER PLATING	COMPANY RESTRICTED	DRAWN TO ISO 128 LIMITS UNLESS STATED: ISO 1302 ISO 13715 Rg 1.6	UNSPECIFIED ±0.4 2 DECIMALS ±0.1	SEE RELEASE NOTE FOR APPROVAL SIGNATORIES	RN-2018-541	MATERIAL: Al 6082 T6	TITLE: EMC2-ZU4 (TE0820) HOUSING
ANGLES ±0° 30'	SIZE: A3	SCALE: N.T.S.	UNLESS OTHERWISE STATED DO NOT SCALE	DIMENSIONS ARE IN mm	REV 01	H.E/899 DRAWN	2018/05/04 DATE	1st. RELEASE PARTICULARS
SHEET: 1 OF 2		FINISH: Chromate conversion coat to ST-256-436-01 C06 TYPE II CLASS IA.		DRAWING NO.:		REV:		460712YY10051D06 01



COMPUTER FILE NAME  
460712YY10051D06.slddrw

LIMITS APPLY  
AFTER PLATING

COMPANY  
RESTRICTED

DRAWN TO ISO 128  
LIMITS UNLESS STATED:  
ISO 1302 ISO 13715  $\pm 0.1$   $\pm 0.1$

UNSPECIFIED  $\pm 0.4$   
2 DECIMALS  $\pm 0.1$

SEE RELEASE NOTE  
FOR APPROVAL SIGNATORIES  
RN-2018-541

MATERIAL:  
Al 6082 T6

TITLE:

EMC2-ZU4  
(TE0820) HOUSING

ANGLES  
 $\pm 0^\circ 30'$

SIZE:  
A3

SCALE:  
N.T.S.

$R_{\alpha} 1.6$

$\pm 0.1$

$\pm 0.1$

SHEET:  
2 OF 2

UNLESS OTHERWISE STATED

01

H.E/899

2018/05/04

1st. RELEASE

FINISH:

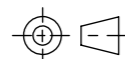
Chromate conversion coat to  
ST-256-436-01 C06 TYPE II CLASS IA.

DRAWING NO.:

460712YY10051D06

REV:

01



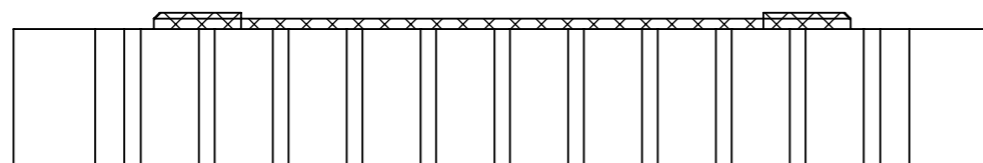
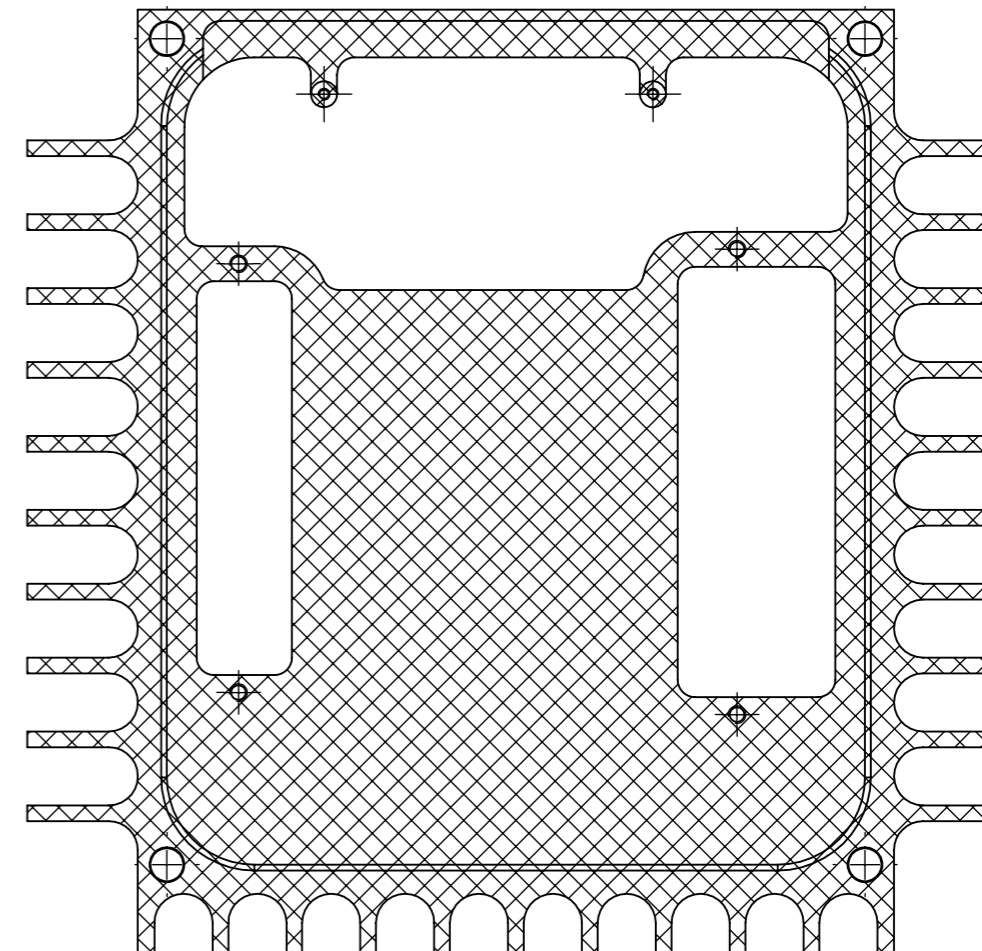
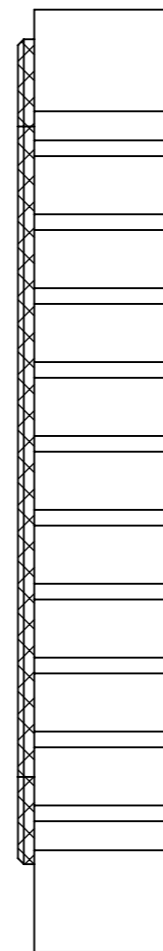
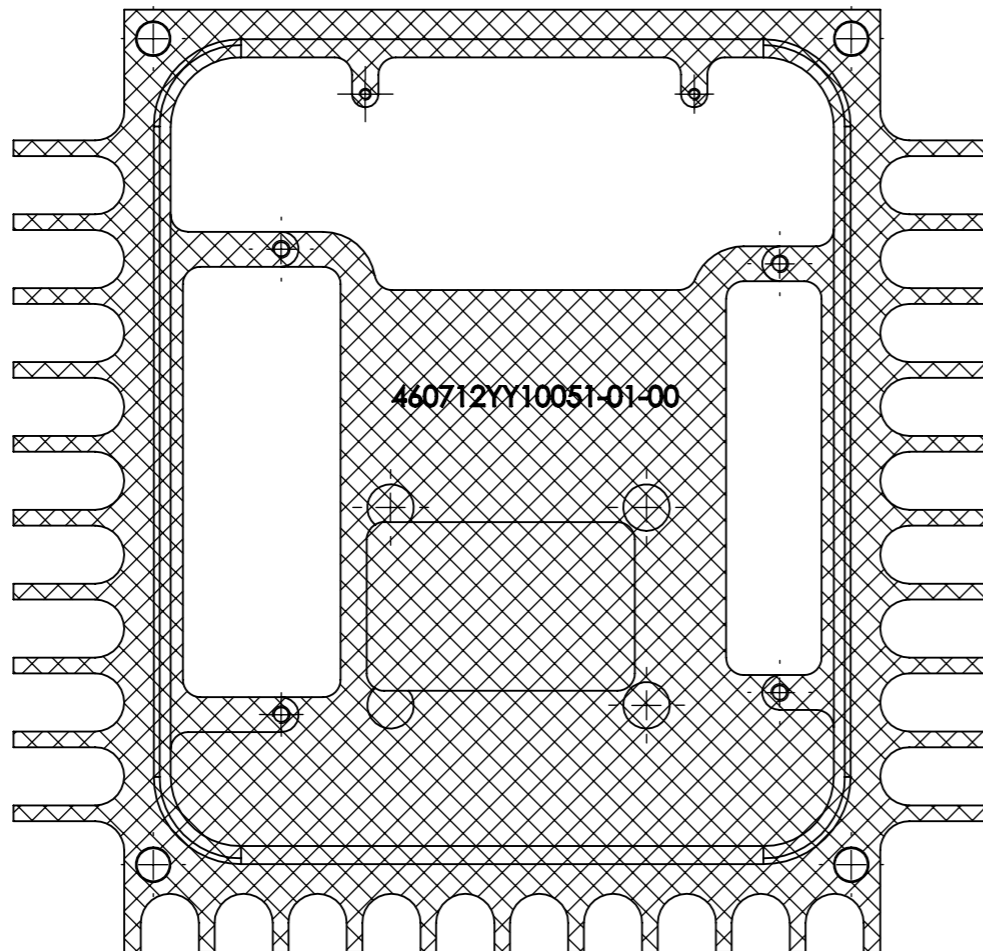
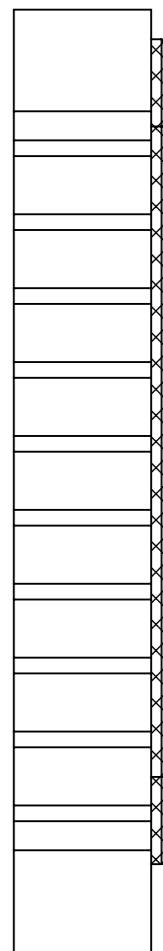
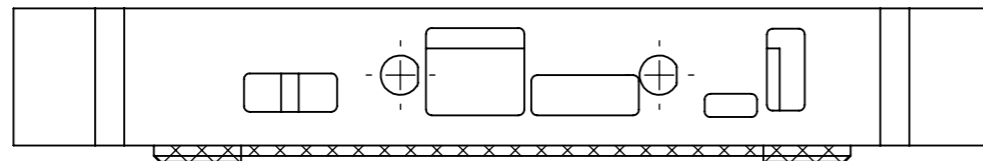
DO NOT SCALE DIMENSIONS ARE IN mm

REV

DRAWN

DATE

PARTICULARS



NOTE:

1. MASK HATCHED AREAS AND HOLES PRIOR TO PAINTING.
2. PAINT TO BE PROGRAM SPECIFIC IN ACCORDANCE WITH THE SUPPLIED C06 DOCUMENT.
3. ADD PREFIX FOR COLOUR VARIATION AS PER PURCHASE ORDER.

SEE RELEASE NOTE FOR APPROVAL SIGNATORIES		RN-2018-541	
01	H.E/899	2018/05/04	1st. RELEASE
REV	DRAWN	DATE	PARTICULARS

MATERIAL:  
Al 6082 T6

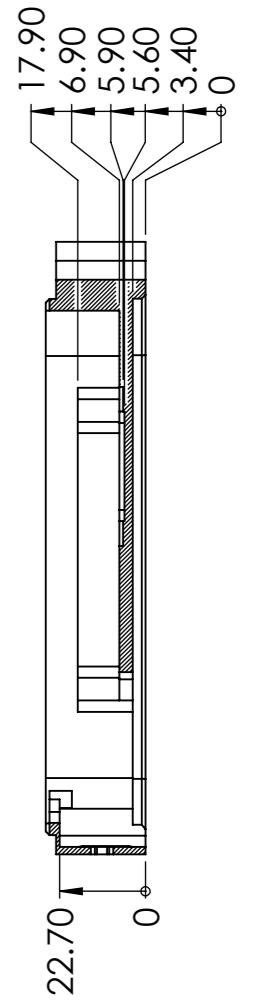
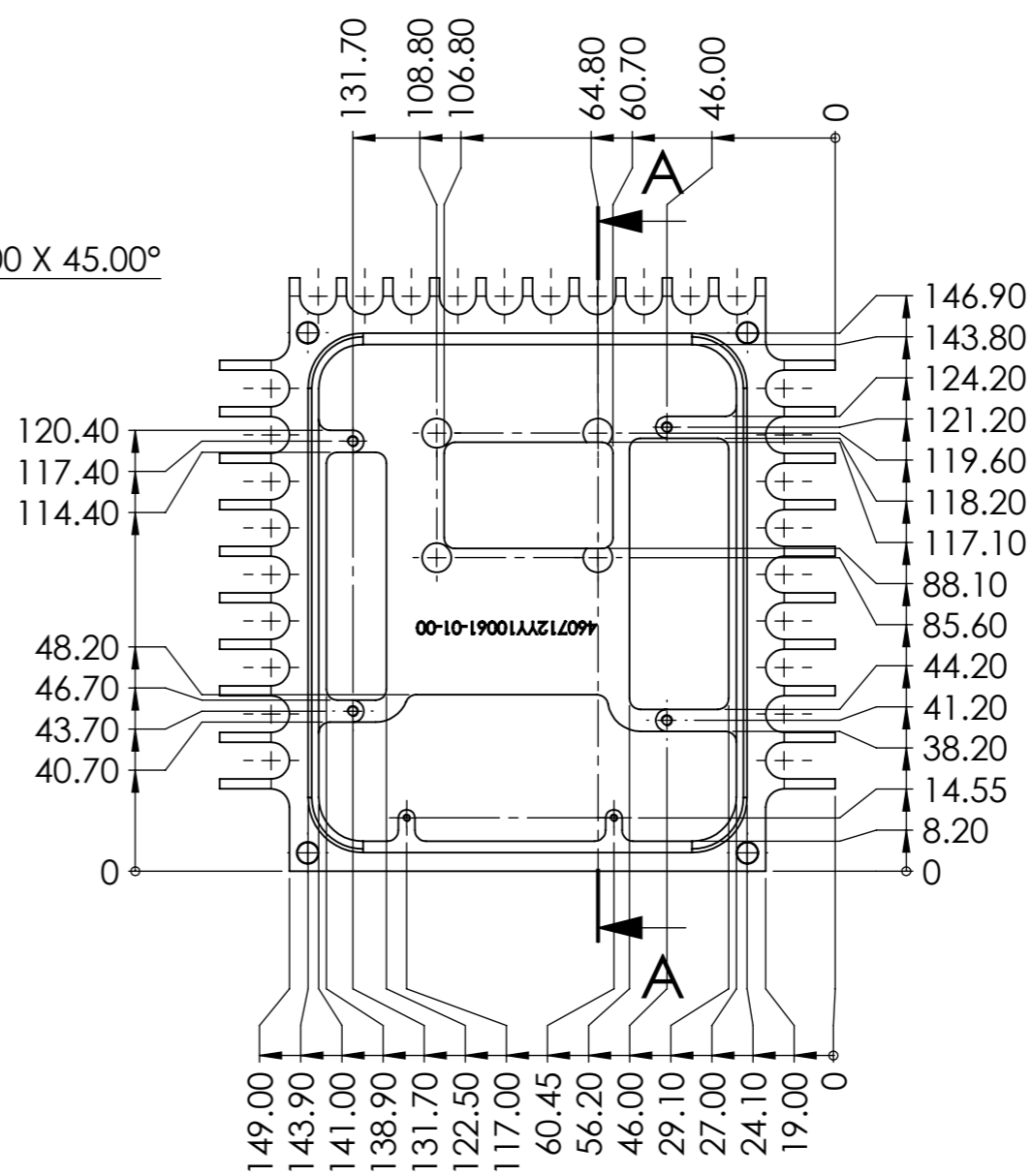
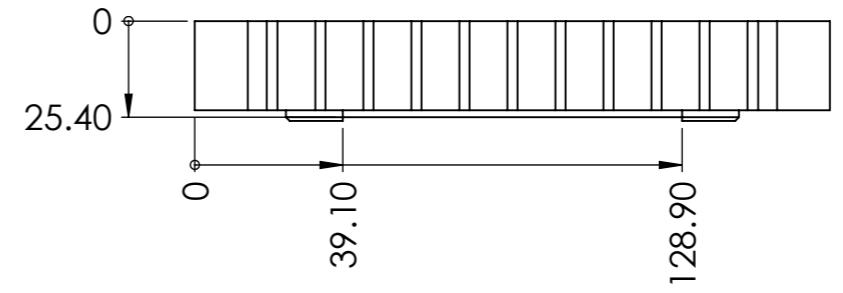
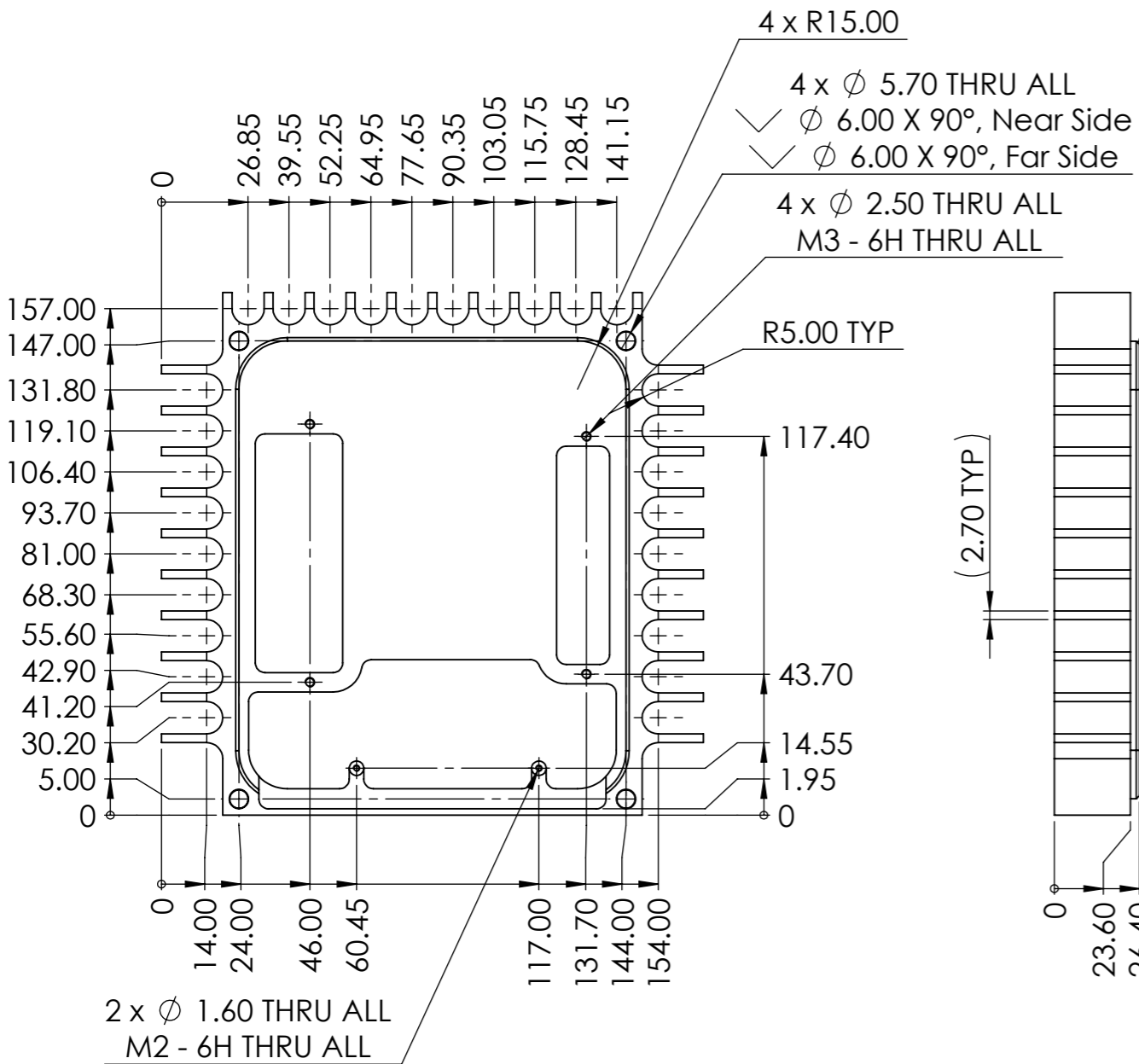
FINISH:  
See Notes.

TITLE:  
**EMC2-ZU4  
(TE0820) HOUSING**

DRAWING NO.: **460712YY10051D10**      REV: **01**

COMPANY RESTRICTED	SIZE: <b>A3</b>	SCALE: <b>N.T.S.</b>	COMPUTER FILE NAME 460712YY10051D10.sldrw
	DRAWN TO ISO 128		
	SHEET: <b>1 of 1</b>	DO NOT SCALE    DIMENSIONS ARE IN mm	

MASS (g) ± 5%	427.92
VOLUME (mm³) ± 5%	157903.71
SURFACE AREA (mm²) ± 5%	79146.63



NOTE:  
 1. PART No. ENGRAVE TO ST-768-364-01 C06.  
 2. FOR PAINTING SEE D10 DRAWING.

COMPUTER FILE NAME  
 460712YY10061D06.slddrw

LIMITS APPLY AFTER PLATING  
 ANGLES ±0° 30'

COMPANY RESTRICTED  
 SIZE: A3  
 SCALE: N.T.S.  
 SHEET: 1 OF 2

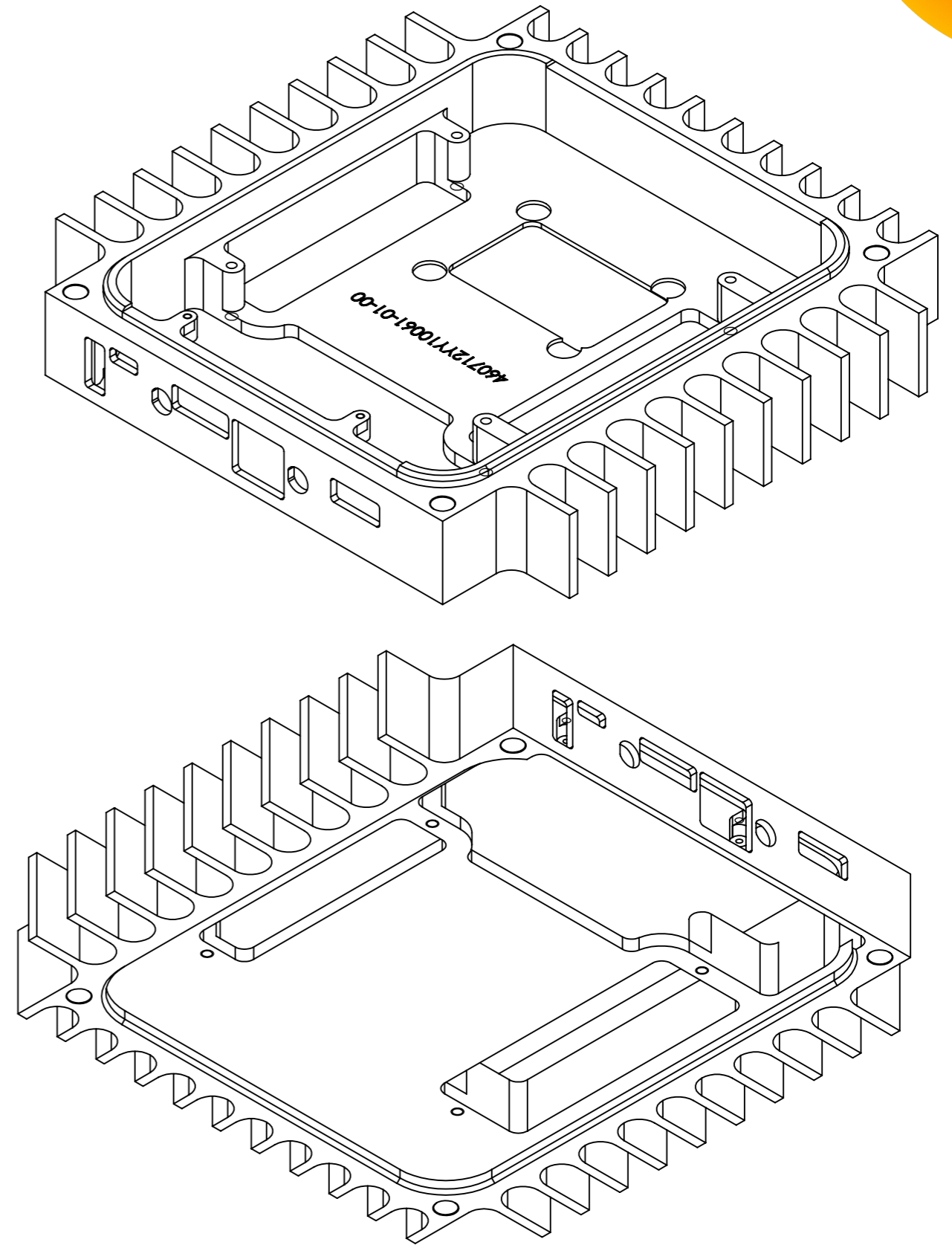
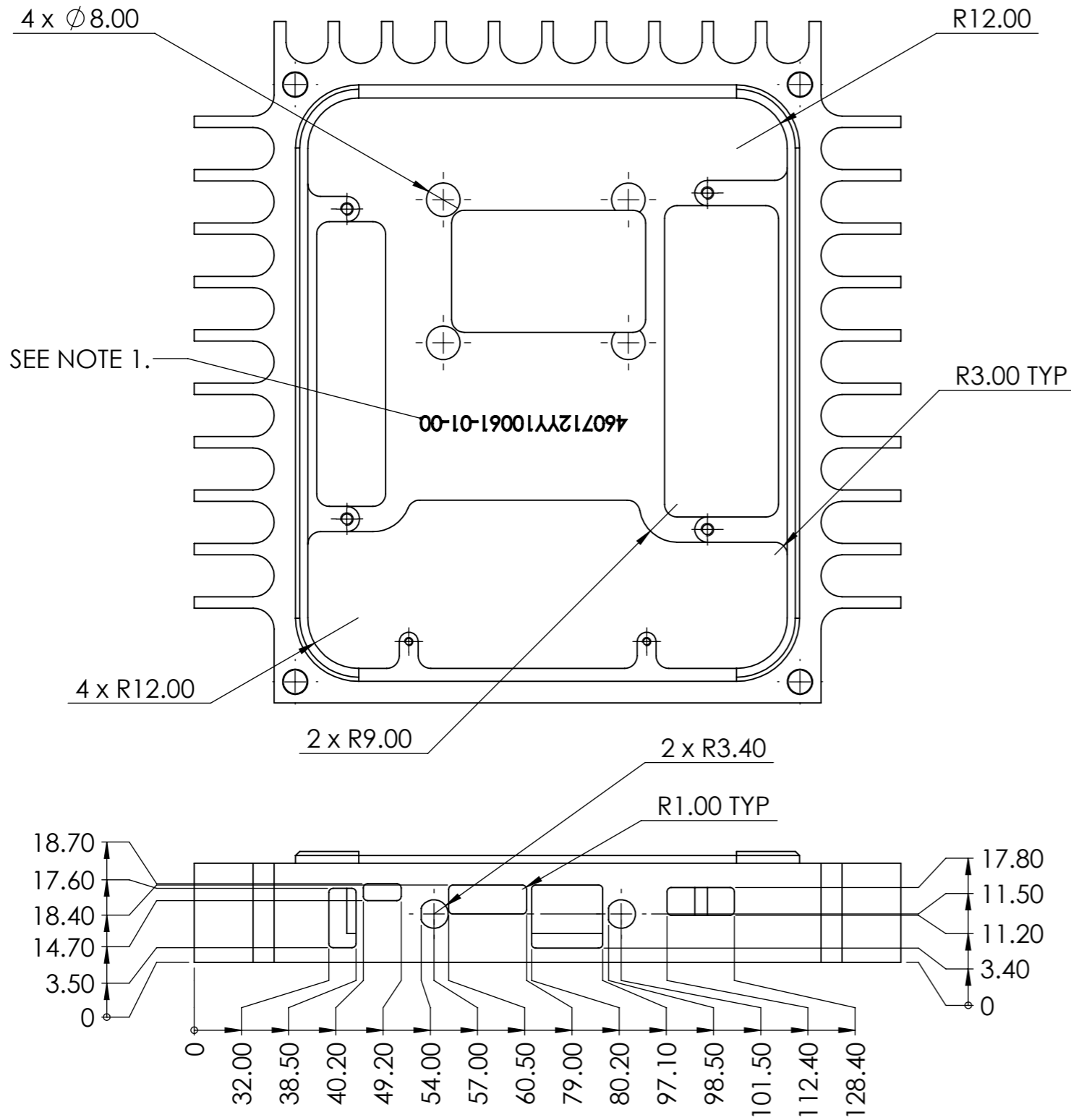
DRAWN TO ISO 128  
 LIMITS UNLESS STATED:  
 ISO 1302  
 UNLESS OTHERWISE STATED  
 UNLESS OTHERWISE STATED  
 DIMENSIONS ARE IN mm

UNSPECIFIED ±0.4  
 2 DECIMALS ±0.1  
 SEE RELEASE NOTE FOR APPROVAL SIGNATORIES  
 RN-2018-541  
 01  
 H.E/899  
 2018/05/04  
 1st. RELEASE  
 PARTICULARS

MATERIAL:  
 Al 6082 T6  
 FINISH:  
 Chromate conversion coat to ST-256-436-01 C06 TYPE II CLASS IA.

TITLE:  
 EMC2-KUXX0  
 (TE0841) HOUSING  
 DRAWING NO.: 460712YY10061D06  
 REV: 01





COMPUTER FILE NAME  
460712YY10061D06.slddrw

LIMITS APPLY  
AFTER PLATING

COMPANY  
RESTRICTED

DRAWN TO ISO 128  
LIMITS UNLESS STATED:  
ISO 1302 ISO 13715  $\pm 0.1$   $\pm 0.1$

UNSPECIFIED  $\pm 0.4$   
2 DECIMALS  $\pm 0.1$

SEE RELEASE NOTE  
FOR APPROVAL SIGNATORIES

RN-2018-541

MATERIAL:  
Al 6082 T6

TITLE:

EMC2-KUXX0  
(TE0841) HOUSING

ANGLES  
 $\pm 0^\circ 30'$

SIZE:  
A3

SCALE:  
N.T.S.

$Ra$  1.6

UNLESS OTHERWISE STATED

01

H.E/899

2018/05/04

1st. RELEASE

FINISH:

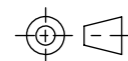
Chromate conversion coat to  
ST-256-436-01 C06 TYPE II CLASS IA.

DRAWING NO.:

460712YY10061D06

REV:

01



SHEET:  
2 OF 2

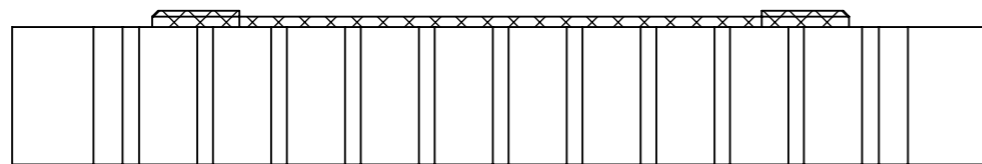
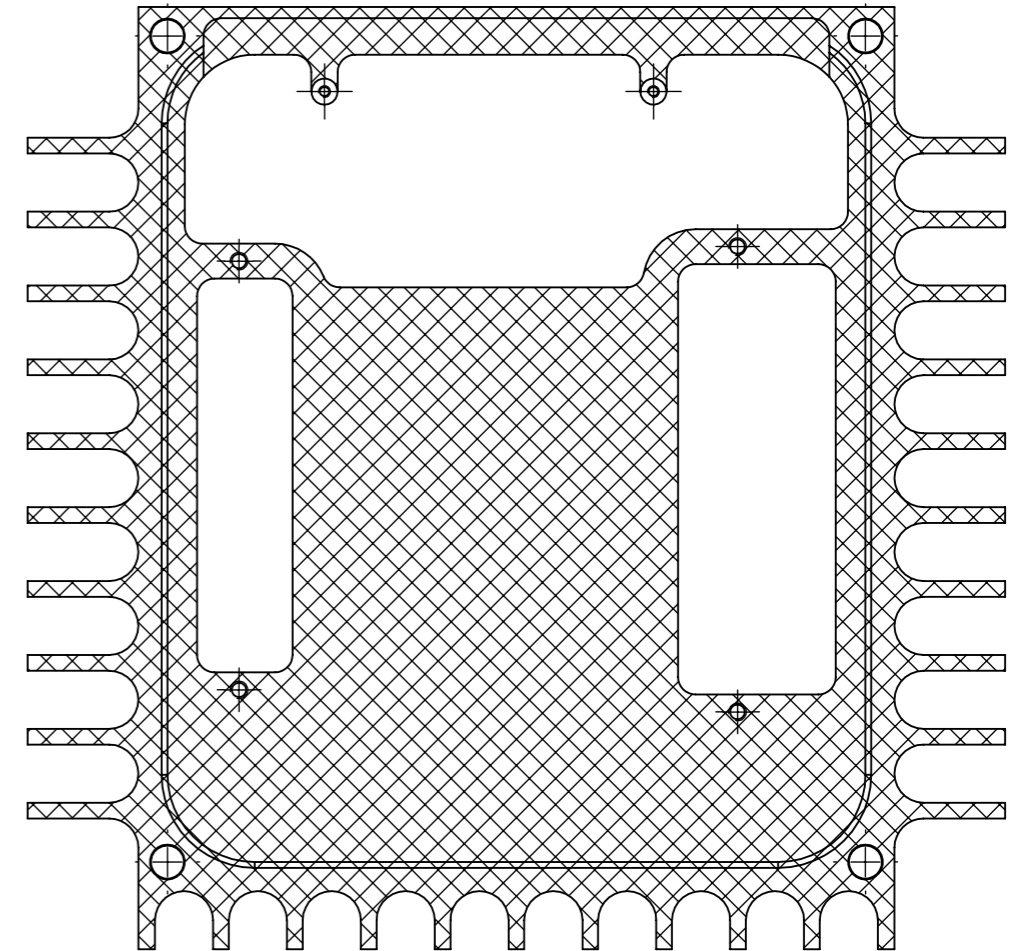
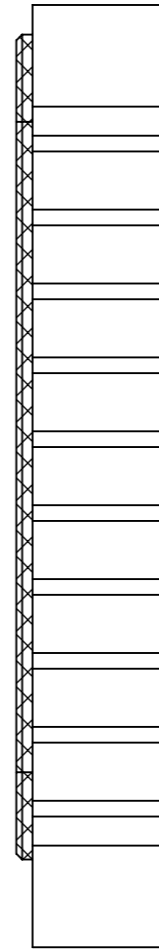
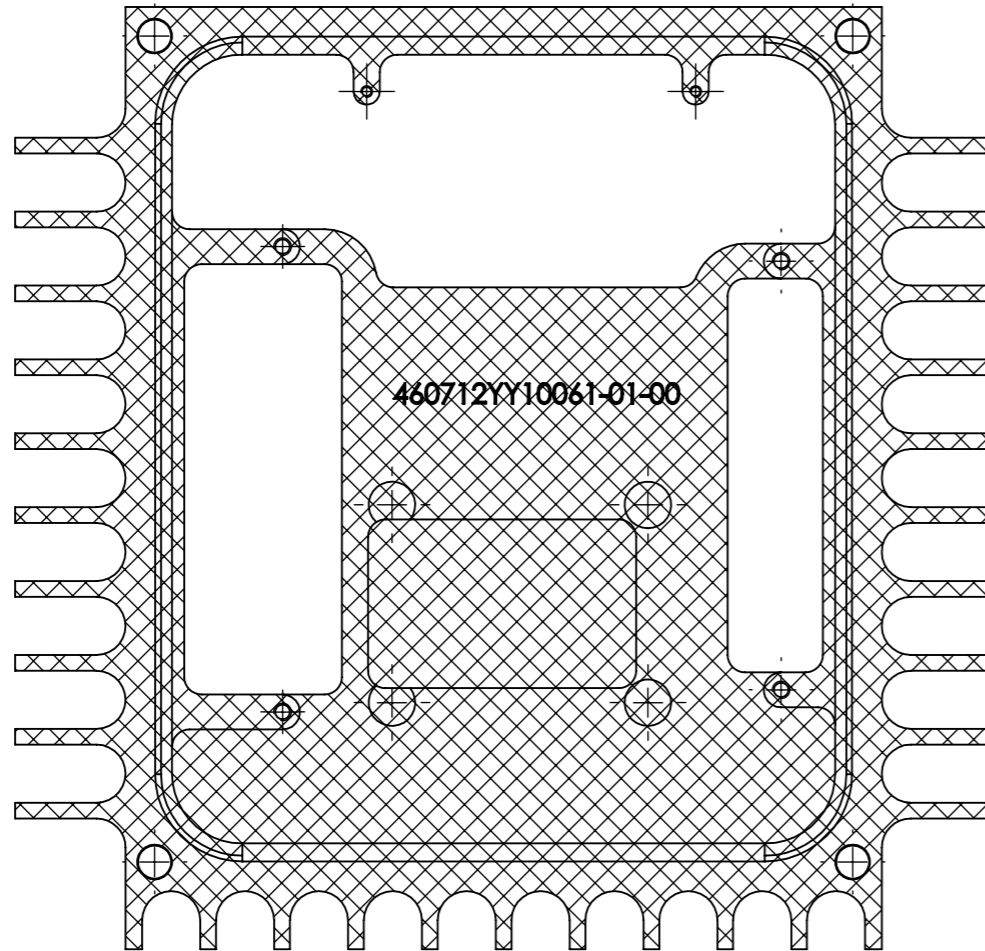
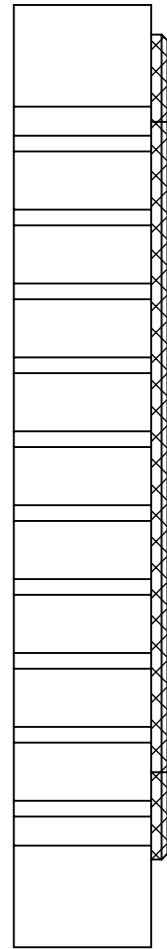
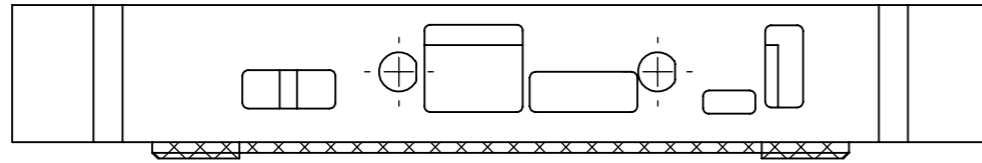
DO NOT SCALE DIMENSIONS ARE IN mm

REV

DRAWN

DATE

PARTICULARS



NOTE:

1. MASK HATCHED AREAS AND HOLES PRIOR TO PAINTING.
2. PAINT TO BE PROGRAM SPECIFIC IN ACCORDANCE WITH THE SUPPLIED C06 DOCUMENT.
3. ADD PREFIX FOR COLOUR VARIATION AS PER PURCHASE ORDER.

SEE RELEASE NOTE FOR APPROVAL SIGNATORIES		RN-2018-541	
01	H.E/899	2018/05/04	1st. RELEASE
REV	DRAWN	DATE	PARTICULARS

MATERIAL:  
Al 6082 T6

TITLE:

EMC2-KUXX0  
(TE0841) HOUSING

DRAWING NO.:

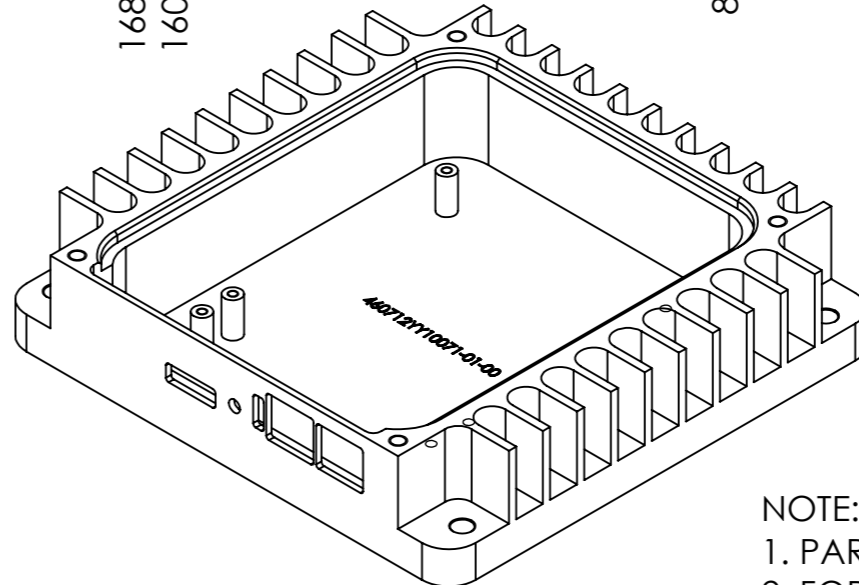
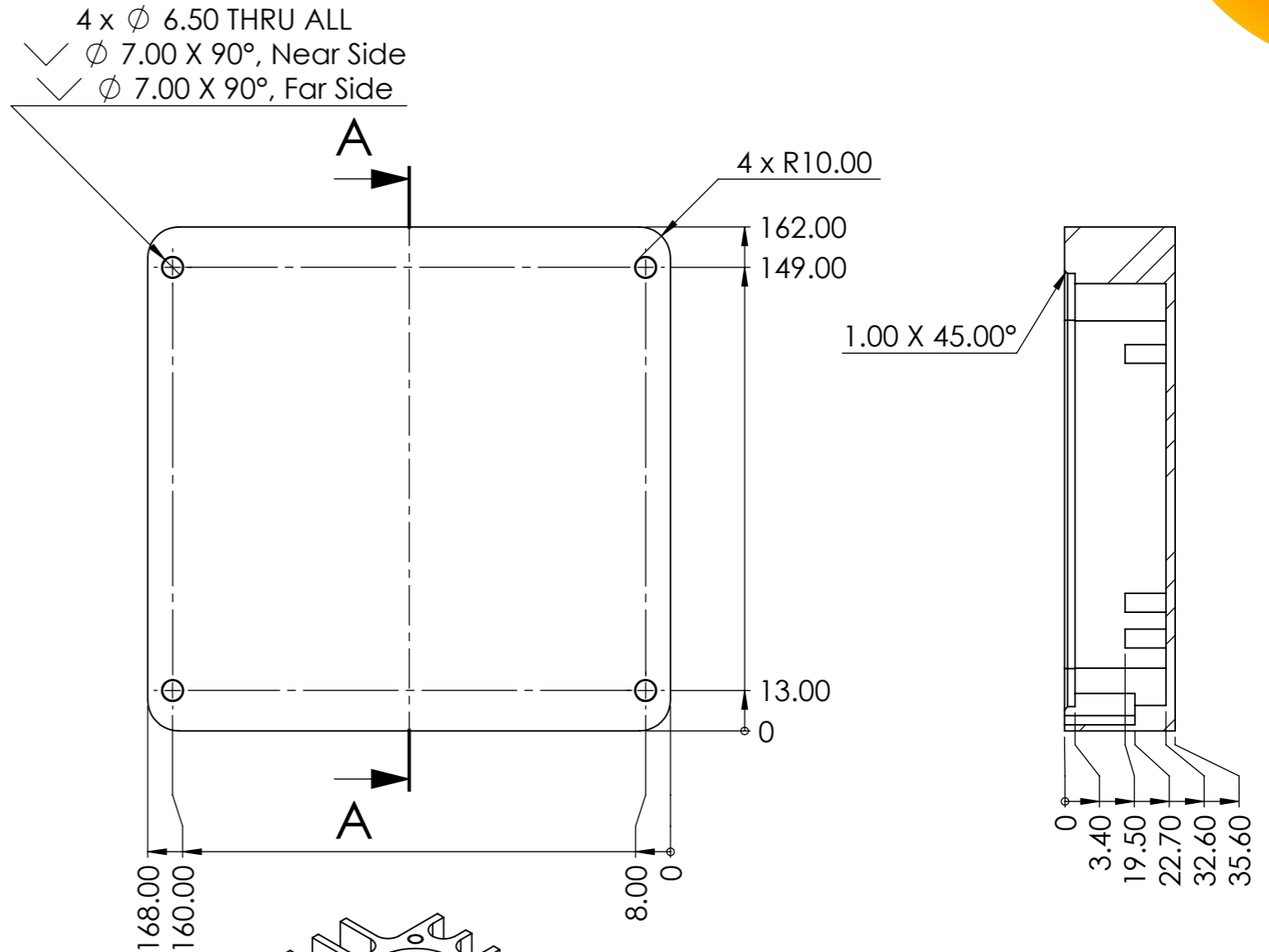
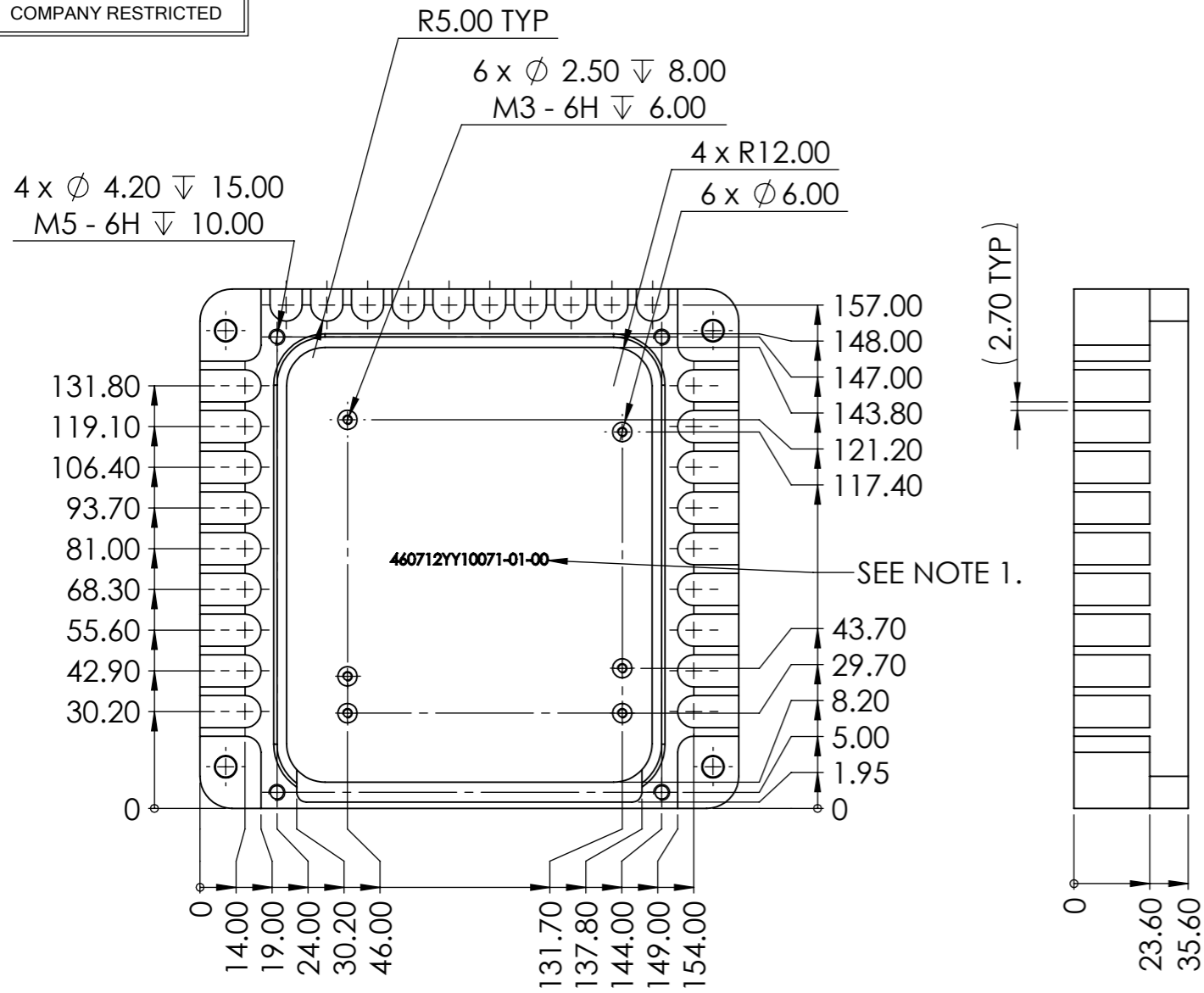
460712YY10061D10

REV:

01

COMPANY RESTRICTED	SIZE: <b>A3</b>	SCALE: N.T.S.	COMPUTER FILE NAME 460712YY10061D10.sldrw
	SHEET: 1 of 1	DRAWN TO ISO 128	
	DO NOT SCALE	DIMENSIONS ARE IN mm	

COMPANY RESTRICTED

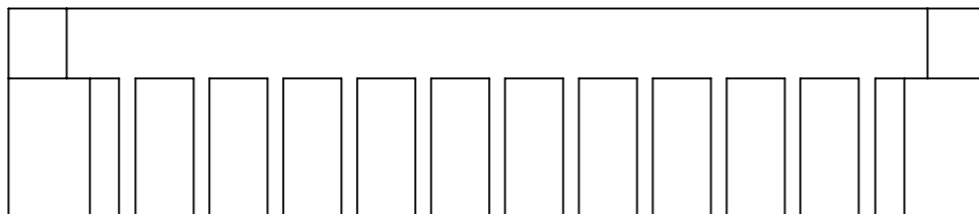
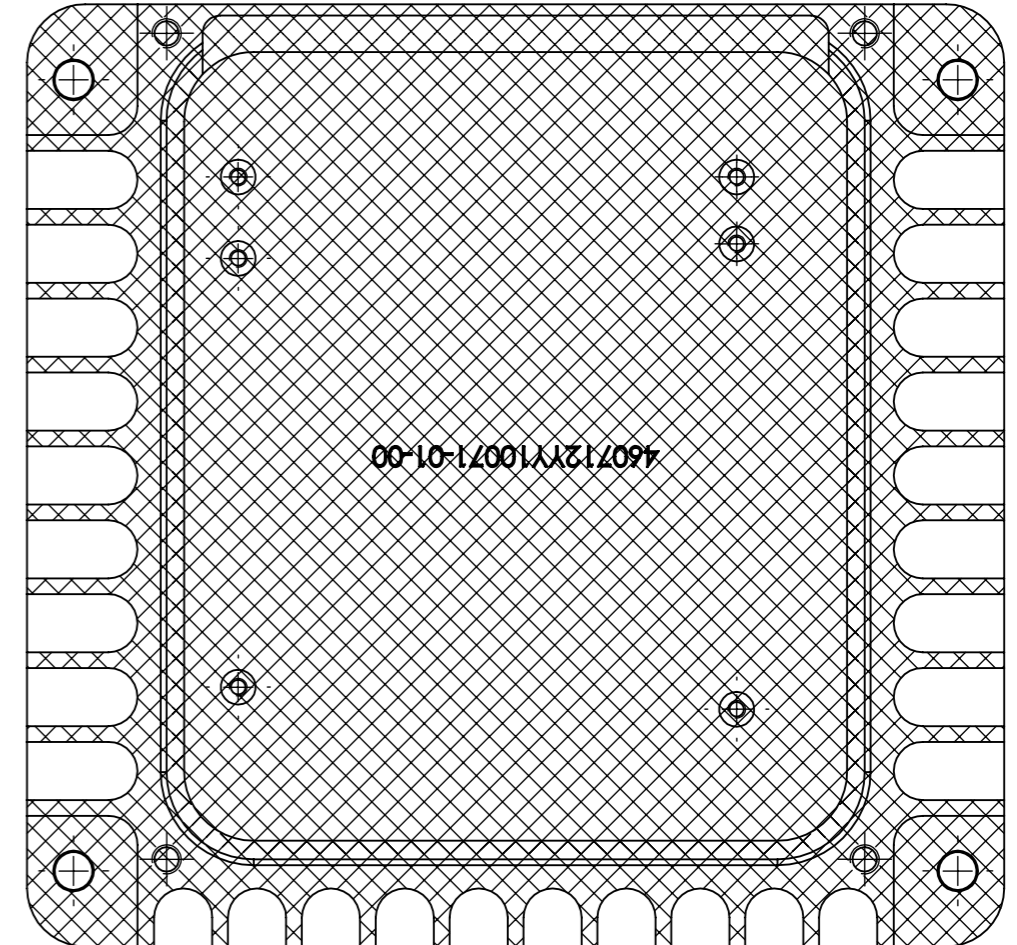
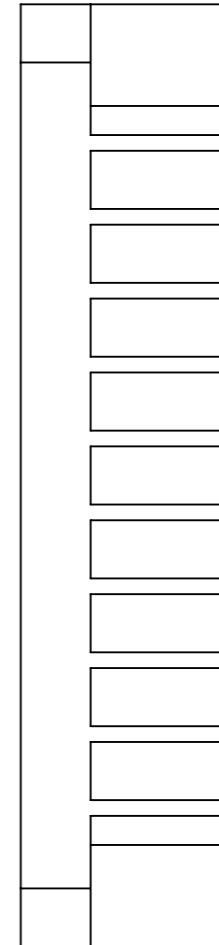
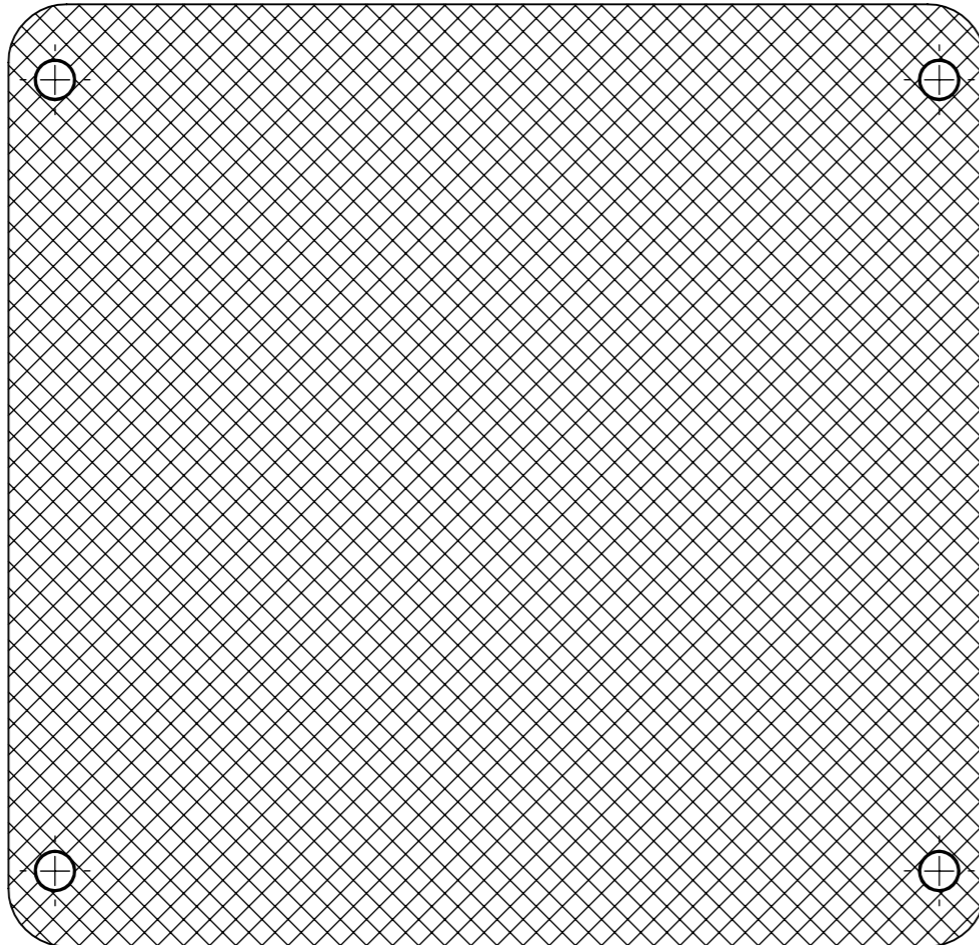
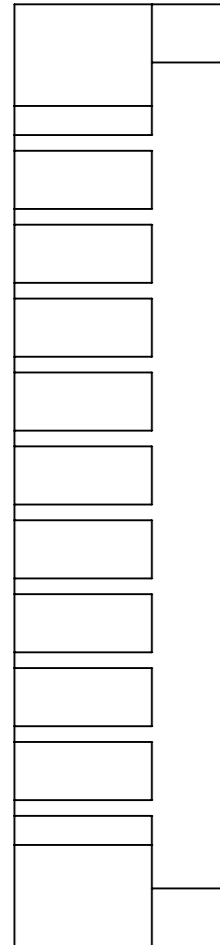
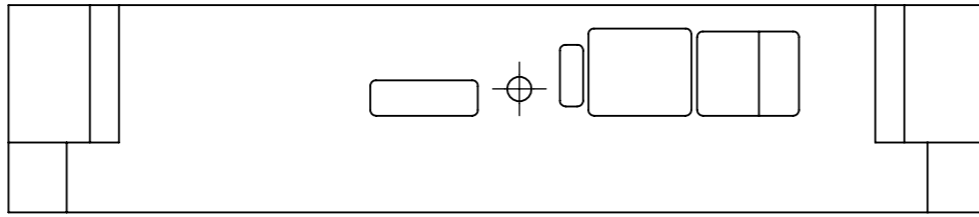


MASS (g) $\pm$ 5%	838.10
VOLUME (mm <sup>3</sup> ) $\pm$ 5%	309261.19
SURFACE AREA (mm <sup>2</sup> ) $\pm$ 5%	113552.59

NOTE:  
1. PART No. ENGRAVE TO ST-768-364-01 C06.  
2. FOR PAINTING SEE D10 DRAWING.

COMPUTER FILE NAME 460712YY10071D06.sldrw	LIMITS APPLY AFTER PLATING	COMPANY RESTRICTED	DRAWN TO ISO 128 LIMITS UNLESS STATED: ISO 1302 ISO 13715	UNSPECIFIED $\pm$ 0.4 2 DECIMALS $\pm$ 0.1	SEE RELEASE NOTE FOR APPROVAL SIGNATORIES	RN-2018-541	MATERIAL: Al 6082 T6	TITLE: SMT1024 PSU HOUSING
	ANGLES $\pm$ 0° 30'	SIZE: A3	SCALE: N.T.S.	$\nabla$ Rg 1.6			FINISH: Chromate conversion coat to ST-256-436-01 C06 TYPE II CLASS IA.	DRAWING NO.: 460712YY10071D06
		SHEET: 1 of 1		UNLESS OTHERWISE STATED DO NOT SCALE	01 REV	H.E/899 DRAWN	2018/05/04 DATE	1st. RELEASE PARTICULARS
				DIMENSIONS ARE IN mm				REV: 01





NOTE:

1. MASK HATCHED AREAS AND HOLES PRIOR TO PAINTING.
2. PAINT TO BE PROGRAM SPECIFIC IN ACCORDANCE WITH THE SUPPLIED C06 DOCUMENT.
3. ADD PREFIX FOR COLOUR VARIATION AS PER PURCHASE ORDER.

SEE RELEASE NOTE FOR APPROVAL SIGNATORIES			RN-2018-541		
01	H.E/899	2018/05/04	1st. RELEASE		
REV	DRAWN	DATE	PARTICULARS		

MATERIAL:  
Al 6082 T6

TITLE:

SMT1024 PSU  
HOUSING

DRAWING NO.:

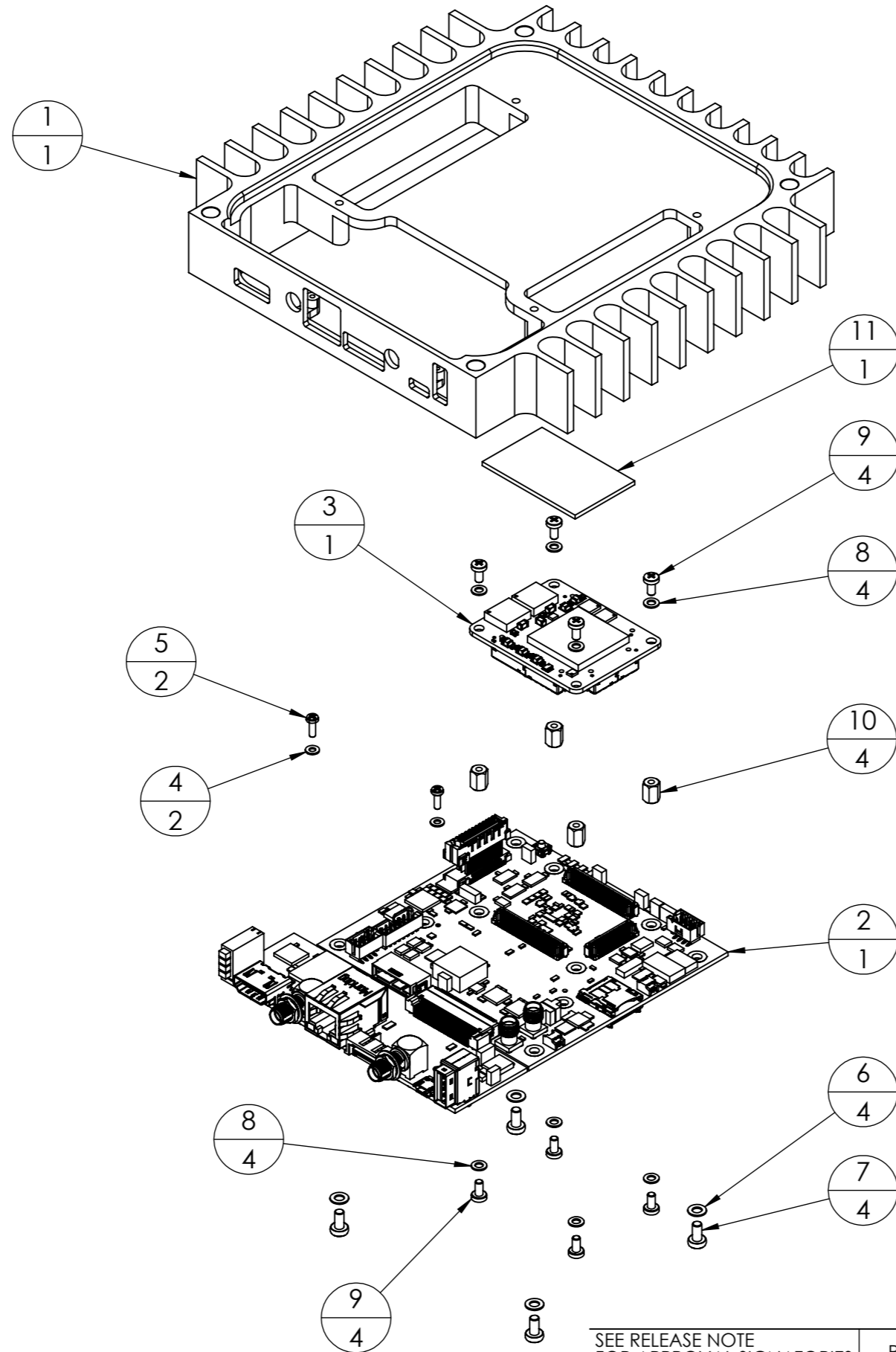
460712YY10071D10

REV:

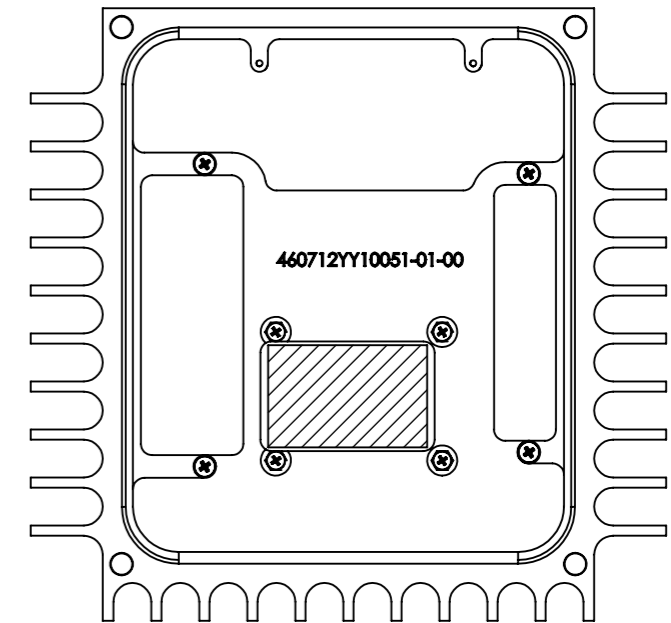
01

COMPANY RESTRICTED	SIZE:	SCALE:	COMPUTER FILE NAME
	A3	N.T.S.	460712YY10071D10.sldrw
	SHEET:	DRAWN TO ISO 128	
	1 OF 1	DO NOT SCALE DIMENSIONS ARE IN mm	

? TOP ITEM NUMBER.  
? BOTTOM QTY OF ITEM.



THERMAL PAD PLACEMENT

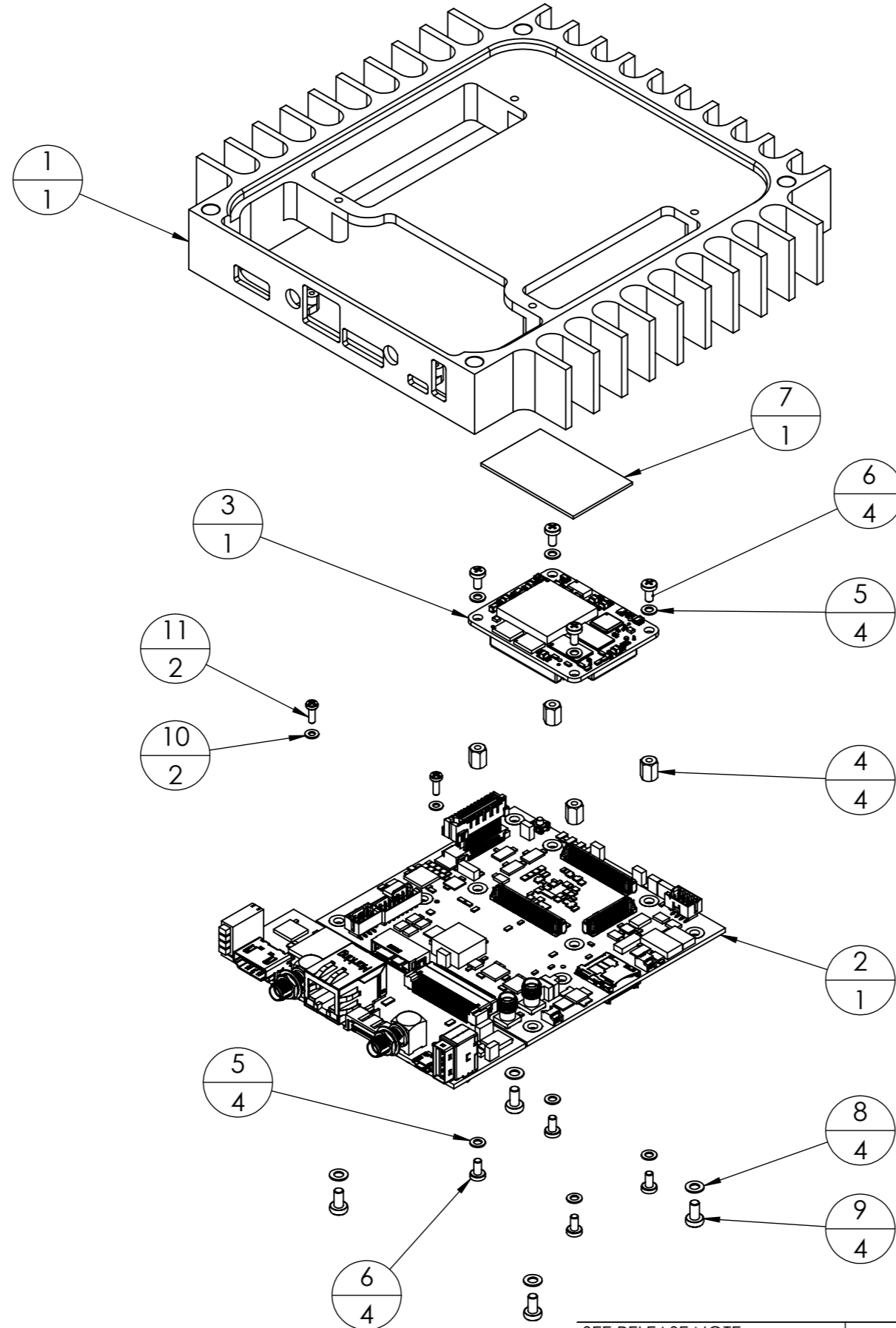


COMPANY RESTRICTED	SIZE:	SCALE:	COMPUTER FILE NAME	SEE RELEASE NOTE FOR APPROVAL SIGNATORIES			RN-2018-541	MATERIAL:	TITLE:
	A3	N.T.S.	460712YY30002D05.slddrw					See Parts List.	
	SHEET:		DRAWN TO ISO 128	UNSPECIFIED ±2.0	01	H.E/899	2018/05/04	1st. RELEASE	DRAWING NO.:
	1 OF 1		LIMITS UNLESS STATED:	2 DECIMALS ±1.0	REV	DRAWN	DATE	PARTICULARS	
			DO NOT SCALE	DIMENSIONS ARE IN mm					REV:
									01

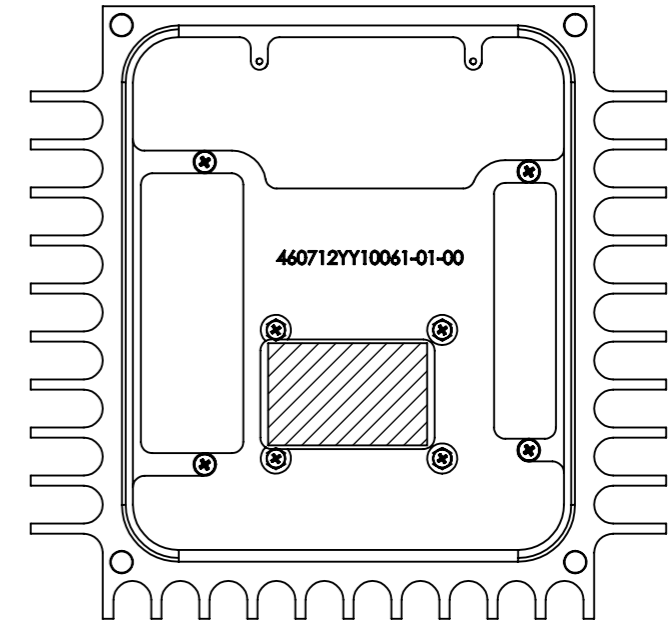
EMC2-ZU4  
SUB ASSEMBLY

DRAWING NO.: 460712YY30002D05  
 REV: 01

? TOP ITEM NUMBER.  
? BOTTOM QTY OF ITEM.

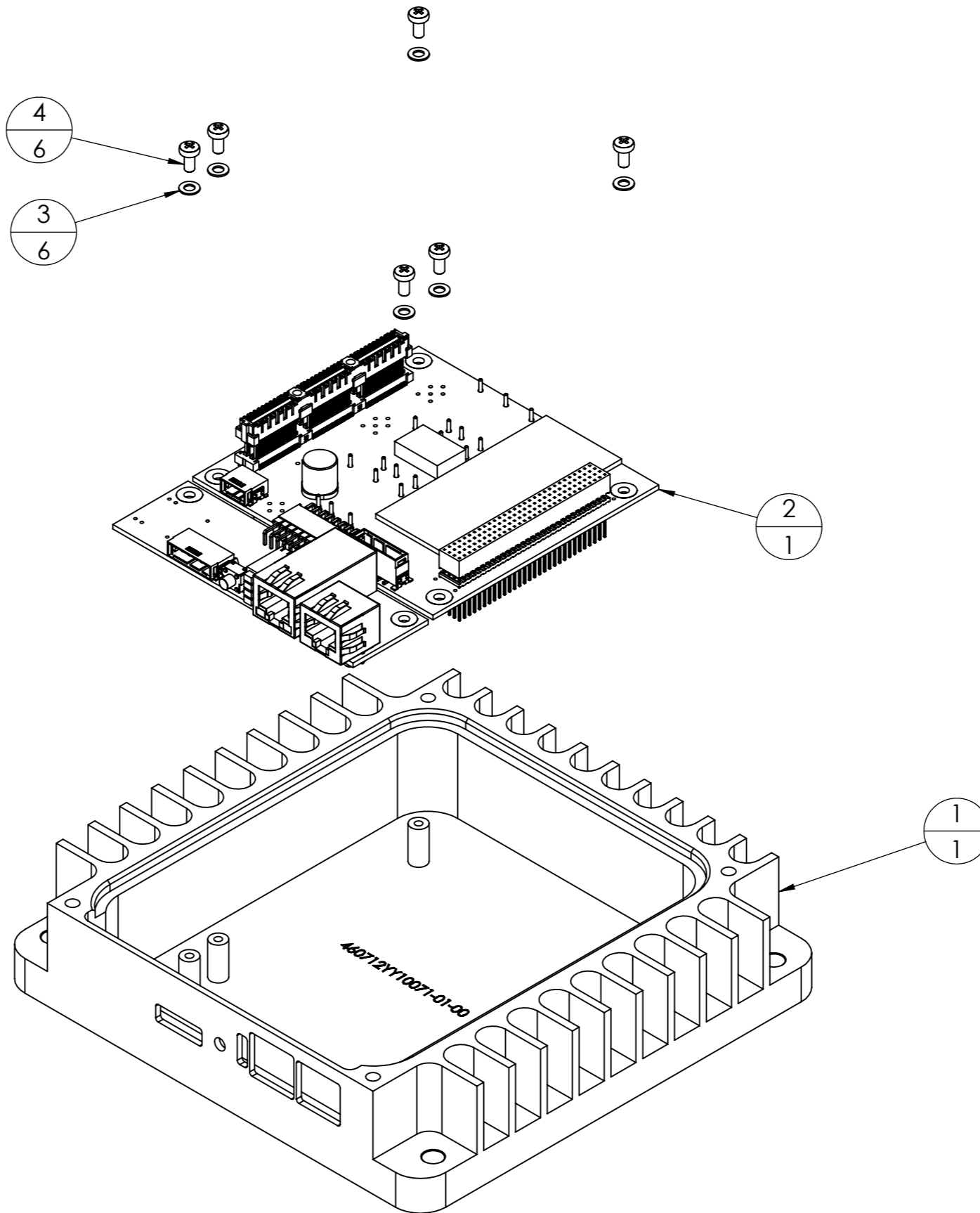


THERMAL PAD PLACEMENT



COMPANY RESTRICTED	SIZE: A3	SCALE: N.T.S.	COMPUTER FILE NAME: 460712YY30012D05.slddrw	SEE RELEASE NOTE FOR APPROVAL SIGNATORIES			RN-2018-541	MATERIAL: See Parts List.	TITLE: EMC2-KU SUB ASSEMBLY DRAWING
		SHEET: 1 OF 1	DRAWN TO ISO 128 LIMITS UNLESS STATED: UNSPECIFIED ±2.0 2 DECIMALS ±1.0 DO NOT SCALE DIMENSIONS ARE IN mm	01	H.E/899	2018/05/04	1st. RELEASE	N/A	NO.: 460712YY30012D05
				REV	DRAWN	DATE	PARTICULARS		REV: 01

⊕ TOP ITEM NUMBER.  
⊖ BOTTOM QTY OF ITEM.



COMPANY RESTRICTED	SIZE:	SCALE:	COMPUTER FILE NAME	SEE RELEASE NOTE FOR APPROVAL SIGNATORIES			RN-2018-541	MATERIAL:	TITLE:
	A3	N.T.S.	460712YY30022D05.slddrw					See Parts List.	
	SHEET:	DRAWN TO ISO 128		01	H.E/899	2018/05/04	1st. RELEASE	FINISH:	DRAWING NO.:
	1 of 1	LIMITS UNLESS STATED: UNspecified ±2.0 2 DECIMALS ±1.0		REV	DRAWN	DATE	PARTICULARS	N/A	
DO NOT SCALE DIMENSIONS ARE IN mm									REV:
									01